

SG、ISG 型泵续表 1 SG、ISG Type Pump Table 1 (continued)

型号 model	流量 Capacity		扬程 head	效率 efficiency	转速 speed	电机功率 motor power	允许气蚀余量 NPSH	重量 weight	型号 model	流量 Capacity		扬程 head	效率 efficiency	转速 speed	电机功率 motor power	允许气蚀余量 NPSH	重量 weight
	m ³ /h	L/s								m ³ /h	L/s						
65SG-80B	20	5.56	60	50	2900	7.5	3.0	111	80SG-32(I)	100	27.8	32	76	2900	15	4.5	170
65SG-12.5(I)	50	13.9	12.5	73	2900	3.0	3.5	59	80SG-32(I)A	88	24.4	28	74	2900	11	4.5	160
65SG-20(I)	50	13.9	20	72.5	2900	5.5	3.5	88	80SG-32(I)B	80	22.2	24	74	2900	7.5	4.5	115
65SG-20(I)A	44	12.2	16	72	2900	4.5	3.5	63	80SG-50(I)	100	27.8	50	74	2900	22	4.0	233
65SG-32(I)	50	13.9	32	71	2900	7.5	3.5	97	80SG-50(I)A	88	24.4	44	73	2900	18.5	4.0	201
65SG-32(I)A	44	12.2	28	70	2900	5.5	3.5	90	80SG-50(I)B	80	22.2	38	72	2900	15	4.0	183
65SG-32(I)B	40	11.1	24	69	2900	4.0	3.5	65	80SG-80(I)	100	27.8	80	69	2900	37	4.0	410
65SG-50(I)	50	13.9	50	67	2900	15	3.5	158	80SG-80(I)A	88	24.4	70	69	2900	30	4.0	395
65SG-50(I)A	44	12.2	44	66	2900	11	3.5	148	80SG-80(I)B	80	22.2	60	68	2900	22	4.5	337
65SG-50(I)B	40	11.1	38	65	2900	7.5	3.5	103	100SG-12.5	100	27.8	12.5	76	2900	5.5	4.5	107
65SG-80(I)	50	13.9	80	60	2900	22	3.0	233	100SG-12.5A	88	24.4	10	75	2900	4.0	4.5	82
65SG-80(I)A	44	12.2	70	57	2900	18.5	3.5	201	100SG-20	100	27.8	20	76	2900	11	4.5	145
65SG-80(I)B	40	11.1	60	61	2900	15	3.5	183	100SG-20A	88	24.4	16	74	2900	7.5	4.5	100
80SG-12.5	50	13.9	12.5	73	2900	3.0	3.5	59	100SG-32	100	27.8	32	76	2900	15	4.5	171
80SG-12.5A	44	12.2	10	72	2900	2.2	3.5	50	100SG-32A	88	24.4	28	74	2900	11	4.5	161
80SG-20	50	13.9	20	72.5	2900	5.5	3.5	89	100SG-32B	80	22.2	24	74	2900	7.5	4.5	116
80SG-20A	44	12.2	16	72	2900	4.0	3.5	64	100SG-50	100	27.8	50	74	2900	22	4.0	234
80SG-32	50	13.9	32	71	2900	7.5	3.5	97	100SG-50A	88	24.4	44	72.5	2900	18.5	4.0	202
80SG-32A	44	12.2	28	70	2900	5.5	3.5	90	100SG-50B	80	22.2	38	72	2900	15	4.0	184
80SG-50	50	13.9	50	67	2900	15	3.0	158	100SG-80	100	27.8	80	69	2900	37	4.0	410
80SG-50A	44	12.2	44	66	2900	11	3.0	148	100SG-80A	88	24.4	70	69	2900	30	4.0	395
80SG-50B	40	11.1	38	65	2900	7.5	3.0	103	100SG-80B	80	22.2	60	68	2900	22	4.0	337
80SG-80	50	13.9	80	60	2900	22	3.0	234	150SG-12.5	200	55.6	12.5	78	1450	15	3.0	220
80SG-80A	44	12.2	70	57	2900	18.5	3.0	202	150SG-12.5A	176	48.9	10	75	1450	11	3.0	205
80SG-80B	40	11.1	60	61	2900	15	3.0	184	150SG-20	200	55.6	20	79	1450	18.5	3.5	298
80SG-12.5(I)	100	27.8	12.5	76	2900	5.5	4.5	106	150SG-20A	176	48.9	17	78	1450	15	3.5	263
80SG-20(I)	100	27.8	20	76	2900	11	4.5	144	150SG-20B	160	44.4	14	77	1450	11	3.5	248
80SG-20(I)A	88	24.4	16	74	2900	7.5	4.5	99	150SG-32	200	55.6	32	78	1450	30	3.5	480



QW Series Submersible Sewage Draining Pump
QW系列潜水排污泵

概述

QW 型系列无堵塞潜水排污泵是根据九五年国家专利技术生产的新型离心泵。该泵在设计上综合地吸收了瑞典科学的叶轮水力设计和西德合理的整体结构、快速的安装技术,以及日本完整的保护装置和先进的机械密封,效率高,能耗少、运行可靠。泵的性能、结构、安装尺寸和技术要求均符合中华人民共和国城乡建设行业标准,因此在国内排水排污行业得到了广泛的应用。

我公司生产的 QW 型无堵塞潜水排污泵,在原设计技术的基础上作了进一步改进,采用先进的微机计算机技术,实行水位自动控制、故障图型显示及保护,使其性能更可靠、使用更方便,更适合于多台泵的自动管理和无人看守时使用。

General

QW series chokeless submersible sewage draining pump is new type centrifugal pump produced according to 1995 national patent technology. Pump design has absorbed Sweden scientific impeller water power design, German reasonable whole structure and quickly installing technology, Japanese perfect protective equipment and advanced mechanical seal. It is high efficiency, power saving, operates reliable. Performances, structure, installing dimension and technical requirements accord to China city and country construction industry standard, so it is widely used in draining water and draining sewage.

Our product has improved on original design technology, adopt advanced microcomputer technology, water level is autocontrolled, trouble map can show and be used more convenience, more suitable for several pumps auto management and no person watching.

QW 型泵性能参数表 QW Type Pump Table of Performance

序号 No.	型号 Model	排出口径 Output diameter (mm)	流量 Capacity (m ³ /h)	扬程 Head (m)	转速 Speed (r/min)	功率 Power (KW)	效率 Efficiency %	重量 Gravity (kg)
1	QWd1.5-16-0.37	Φ25	1.5	16		0.37	68	20
2	QWX15-7-1.1	Φ50	15	7	2860	1.1	65	29
3	QWX7-15-1.1	Φ32	7	15	2860	1.1	65	29
4	QWX20-5-1.1	Φ50	20	5	2860	1.1	68	30
5	QWX25-10-1.5	Φ80	25	10	2860	1.5	70	35
6	QWX13-15-1.5	Φ50	13	15	2860	1.5	69	35
7	QWX35-7-2.2	Φ80	35	7	2860	2.2	72	38
8	QWX50-8-2.2	Φ32	50	8	1450	2.2	72.5	40
9	QWd120-4.5-2.2	Φ100	120	4.5	1450	2.2	73.8	40
10	QWX9-22-2.2	Φ40	9	22	2860	2.2	63	36
11	QWX10-20-2.2	Φ50	10	20	2860	2.2	68	36
12	QWX10-32-3	Φ32	10	32	2860	3	58	49
13	QWX25-15-3	Φ50	25	15	2860	3	69.5	49
14	QWd39-10-3	Φ80	39	10	2860	3	72.8	50
15	QWX5-50-3	Φ32	5	50	2860	3	56.5	49
16	QWX15-25-3	Φ32	15	25	2860	3	64.5	50
17	QWd80-8-4	Φ100	80	8	1450	4	74.3	68
18	QWd100-7-4	Φ100	100	7	1450	4	75.6	72
19	QWd20-22-4	Φ50	20	22	2860	4	69.8	42
20	QWX30-22-5.5	Φ100	70	10	2860	5.5	75.9	105
21	QWX30-22-5.5	Φ65	30	22	2860	5.5	72.6	100
22	QWX40-15-5.5	Φ50	40	15	1440	5.5	73.2	100
23	QWX12-50-5.5	Φ32	12	50	1440	5.5	61.9	100
24	QWX20-32-5.5	Φ50	20	32	1440	5.5	68.2	100
25	QWd110-8-5.5	Φ100	110	8	1450	5.5	74.2	110
26	QWd120-10-5.5	Φ100	120	10	1450	5.5	75.6	110
27	QWX18-38-5.5	Φ50	18	38	2860	5.5	62.2	115
28	QWd45-16-5.5	Φ65	45	16	2860	5.5	70.3	100
29	QWd100-10-5.5	Φ100	100	10	1450	5.5	74.6	105
30	QWd70-13-5.5	Φ100	70	13	2860	5.5	70.5	105
31	QWd145-7-5.5	Φ150	145	7	1450	5.5	74.5	120
32	QWd30-35-7.5	Φ80	30	35	2860	7.5	65.5	140
33	QWd50-22-7.5	Φ65	50	22	2860	7.5	62	140
34	QWd145-10-7.5	Φ150	145	10	1450	7.5	74	150
35	QWd210-7-7.5	Φ150	210	7	1450	7.5	75.2	150
36	QWd61-18-7.5	Φ80	60	18	2860	7.5	69.5	145
37	QWd70-16-7.5	Φ100	70	16	2860	7.5	70.2	140
38	QWd35-30-7.5	Φ80	35	30	2860	7.5	62	140
39	QWd150-12-11	Φ150	150	12	1450	11	73	210
40	QWd180-10-11	Φ150	180	10	1450	11	75.5	220
41	QWd110-16-11	Φ100	110	16	1450	11	72	210
42	QW210-8.5-11	Φ150	210	8.5	1450	11	76	210
43	QWd50-35-11	Φ80	50	35	2860	11	62	210
44	QWd30-40-11	Φ80	30	40	2860	11	58	210
45	QWd70-22-11	Φ100	70	22	1450	11	69.6	210
46	QWd300-7-11	Φ200	300	7	1450	11	76	210
47	QWB43-50-15	Φ50	43	50	2860	15	58.2	240
48	QWd25-90-15	Φ50	25	90	2860	15	56.5	250
49	QWd88-28-15	Φ100	88	28	1450	15	63.2	260
50	QWd100-22-15	Φ100	100	22	1450	15	70	250
51	QWd140-18-15	Φ200	140	18	1450	15	74	250
52	QWd150-15-15	Φ150	150	15	1450	15	73	250
53	QWd210-11.5-15	Φ150	210	11.5	1450	15	75	260
54	QWd300-10-15	Φ200	300	10	1450	15	74.5	265
55	QWd180-19-15	Φ150	180	19	1450	15	70	250

QW 型泵续表 1 QW Type Pump Table 1 (continued)

序号 No.	型号 Model	排出口径 Output diameter (mm)	流量 Capacity (m ³ /h)	扬程 Head (m)	转速 Speed (r/min)	功率 Power (KW)	效率 Efficiency %	重量 Gravity (kg)
56	QWd400-7-15	Φ250	400	7	1450	15	74	290
57	QWd100-28-18.5	Φ100	100	28	1450	18.5	68	350
58	QWd250-15-18.5	Φ200	250	15	980	18.5	71	350
59	QWd200-22-22	Φ200	200	22	1450	22	70	400
60	QW160-32-22	Φ150	160	32	1450	22	68	400
61	QWd130-30-22	Φ100	130	30	1450	22	66	400
62	QWd400-10-22	Φ200	400	10	980	22	72	420
63	QWd600-7-22	Φ200	600	7	980	22	73	450
64	QWd600-10-30	Φ200	600	10	960	30	71	450
65	QWd250-22-30	Φ200	250	22	980	30	68	420
66	QWd360-15-30	Φ200	360	15	980	30	70	420
67	QWd480-13-30	Φ200	480	13	980	30	72	450
68	QWd150-45-37	Φ150	150	45	1450	37	61	750
69	QWd800-10-37	Φ300	800	10	960	37	73	780
70	QWd200-30-37	Φ200	200	30	1450	37	63	750
71	QWd350-20-37	Φ200	350	20	1450	37	68	750
72	QWd480-15-37	Φ200	480	15	1450	37	70	780
73	QWd900-8-37	Φ300	900	8	980	37	74	800
74	QWd250-35-45	Φ200	250	35	1450	45	68	800
75	QWd400-24-45	Φ200	400	24	1450	45	68	820
76	QWd600-15-45	Φ250	600	15	980	45	69.5	850
77	QWd250-40-55	Φ200	250	40	1450	55	59	1150
78	QWd400-30-55	Φ200	400	30	980	55	59	1150
79	QWd600-20-55	Φ250	600	20	980	55	68	1200
80	QWd900-12-55	Φ300	900	12	980	55	70	1200
81	QWd800-15-55	Φ300	800	15	980	55	69	1300
82	QWd1100-10-55	Φ300	1100	10	740	55	74	1200
83	QWd130-55-55	Φ150	130	55	1450	55	58	1350
84	QWd350-40-75	Φ200	350	40	1450	75	60	1500
85	QWd600-25-75	Φ200	600	25	980	75	66	1500
86	QWd800-20-75	Φ250	800	20	980	75	70	1500
87	QWd1500-10-75	Φ300	1500	10	980	75	74	1600
88	QWd600-30-90	Φ250	600	30	980	90	70	1800
89	QWd950-20-90	Φ300	950	20	980	90	70	1800
90	QWd1500-12-90	Φ400	1500	12	980	90	82	2000
91	QWd700-30-110	Φ250	700	30	980	110	72	2100
92	QWd1750-12-110	Φ400	1750	12	980	110	83	2300
93	QWd950-24-110	Φ300	950	24	980	110	73	2100
94	QWd2100-10-110	Φ400	2100	10	980	110	82	2500
95	QWd1085-25-132	Φ300	1085	25	980	132	80	2800
96	QWd2000-13-132	Φ400	2000	13	740	132	84	2800
97	QWd1000-30-160	Φ300	1000	30	980	160	72	3000
98	QWd1500-26-160	Φ300	1500	26	980	160	73	3100
99	QWd1700-20-160	Φ400	1700	20	980	160	76	3100
100	QWd2000-15-160	Φ400	2000	15	740	160	79	3100
101	QWd3000-13-180	Φ500	3000	13	690	180	81	3500
102	QWd3500-13-200	Φ500	3500	13	690	200	82	3800
103	QWd2600-15-200	Φ400	2600	15	980	200	79	3800
104	QWd1700-30-250	Φ400	1700	30	980	250	73	4000
105	QWd3000-16-250	Φ500	3000	16	690	250	75	4000
106	QWd2400-22-250	Φ500	2400	22	740	250	78	4000
107	QWd1800-32-250	Φ400	1800	32	980	250	76	4000
108	QWd2650-24-300	Φ500	2650	24	740	300	76	4300
109	QWd3750-17-300	Φ500	3750	17	740	300	80	4300

Y型立式多级长轴泵
Type YL Vertical Double-stages Long Shaft Pump



概述

YL 系列立式长轴泵，采用浸没式叶轮，立式安装。它具有结构紧凑，工作平稳，操作简单、维修方便、占地面积小；通用化、标准化程度高的优点。是我公司吸收了世界发达国家立式长轴泵设计和制造的先进经验，为适应我国市场需求研制和发展的先进成熟的系列产品。

该产品具有工业给排水；城市饮用水、生活消防及江、河湖、海取水等多种用途，适合冶金、矿山、化工、造纸、水电站等工业场所。

型号意义

① ② ③ - ④ ⑤ / ⑥

- 1 —— 泵吐出口径 (100~700)。单位 mm。
- 2 —— 立式长轴泵系列代号 YL。
- 3 —— 叶轮级数 (叶轮级数为 1 时略)。
- 4 —— 泵名义总扬程。单位: m。
- 5 —— 切割叶轮代号。以 A、B 示之。
- 6 —— 泵中间管数 N (0.1.2……, 中间管数为 1 时略)。

其中 1、2、3、4、5 为泵基本型号，6 为用户订货时按要求注明。

吐出口径 350mm 立式长轴泵，二级叶轮，总扬程 60 米，一次切割。

General

Model YL vertical long shaft pump series adopts submerged blade wheel and vertical installation structure. It has merits of compact structure, stable running, easy operation, convenient maintenance, small ground space, high degree of versatility and standardization. It is an up-to-date mature product series researched and developed by our company on the basis of absorption of advanced experiences on design and manufacture of vertical long shaft in the developed countries with accommodation to the domestic market requirements.

The product has many applications including industrial water supply and drainage, tap water of city, living water and fire-fighting water, water pumping from river, lake and sea. It is used in industries of metallurgical, mine, chemical, papermaking, water power station, etc.

Meaning of model code:

- 1 - Outlet port diameter of pump (100~700). Unit: mm.
- 2 - Code for YL vertical long shaft pump series.
- 3 - Stage number of blade wheel (it can be omitted when stage number of blade wheel is 1).
- 4 - Nominal total lift of pump. Unit: m.
- 5 - Code of cutting blade wheel. Shown as A, B.
- 6 - Pump middle pipe number N (0, 1, 2... it can be omitted when middle pipe number is 1).

Among them, 1, 2, 3, 4, 5 are the basic model code of pump. 6 must be declared when the user is placing his order.

Vertical long shaft pump with outlet port diameter of 350mm, 2-stage blade wheel, total lift of 60 m, and one time cutting.

YL 型泵性能参数表 YL Type Pump Table of Performance

泵型号 Model	流量Q(m³/h) Capacity	扬程 H(m) Head	转速n (rpm) speed	效率 % Efficiency	配用功率(KW) Motor power
40YL - 6	3	10	2990	22	1.1
	7	10.2		41	
	11	9		45	
50YL - 10	15	10	1450	50	1.5
50YL2 - 10	15	20	1450	50	3
65YL - 10	30	10	1450	55	2.2
65YL2 - 20	30	20	1450	55	4
80YL - 10	50	10	1450	60	4
80YL2 - 10	50	20	1450	60	7.5

泵型号 Model	流量 Q (m³/h) Capacity	扬程 H (m) Head	转速 n (rpm) Speed	电机功率 n(KW) Motor Power	叶轮直径 D(mm) Impeller diameter	泵质量 M (kg) Pump mass
100YL - 13	30	15.6	1450	4	210	1100 + 100N
	60	12.5				
	75	9.7				
100YL - 20	30	24	1450	7.5	250	1120 + 100N
	60	19.9				
	75	16.7				
100YL - 20A	27.3	19.9	1450	5.5	226	1120 + 100N
	54.6	16.5				
	68.3	13.8				
100YL2 - 25	30	31.2	1450	7.5	275	1260 + 100N
	60	25				
	75	26.4				
100YL2 - 32	30	39.6	1450	11	320	1320 + 100N
	60	32.4				
	75	26.4				
100YL2 - 40	30	48	1450	15	355	1350 + 100N
	60	39.8				
	75	33.4				
100YL3 - 60	30	72	1450	22	320	1460 + 100N
	60	59.7				
	75	50.1				
100YL3 - 60A	27.3	59.6	1450	15	280	1460 + 100N
	54.6	49.4				
	68.3	41.5				
150YL - 25	75	28.5	1450	22	275	1460 + 140N
	150	25				
	190	19.5				
150YL - 25A	68.3	22.8	1450	15	250	1460 + 140N
	136.5	19				
	172.9	13.7				
150YL - 37	75	43.7	1450	30	335	1520 + 140N
	150	36.6				
	190	30.3				
150YL - 37A	68.3	35.1	1450	22	320	1520 + 140N
	136.5	32.5				
	173	30.2				
150YL2 - 46	75	48.2	1450	37	270	1580 + 140N
	150	46				
	190	43.2				
150YL2 - 60	75	64.5	1450	45	310	1620 + 140N
	150	60.4				
	190	56.8				
200YL - 15	190	17.4	1475	22	268	1500 + 160N
	300	14.5				
	360	11.9				

泵型号 Model	流量 Q (m³/h) Capacity	扬程 H (m) Head	转速 n (rpm) Speed	电机功率 n(KW) Motor Power	叶轮直径 D(mm) Impeller diameter	泵质量 M (kg) Pump mass
200YL - 23	190	26.8	1475	37	296	1550 + 160N
	300	23				
	360	20.2				
200YL - 23A	172.9	22.2	1475	30	269.4	1550 + 160N
	273	19				
	327.6	16.7				
200YL2 - 29	190	34.8	1475	45	268	1700 + 160N
	300	29				
	360	23.8				
200YL2 - 38	190	44.2	1475	55	268	1800 + 160N
	300	37.5				
	360	32.1				
200YL2 - 46	190	53.6	1475	75	296	1850 + 160N
	300	46.1				
	360	40.4				
200YL3 - 69	190	80.4	1475	110	296	2000 + 160N
	300	69				
	360	60.6				
200YL3 - 69A	172.9	66.6	1475	90	269.4	2000 + 160N
	273	57				
	327.6	50.1				
250YL - 20	360	22.8	1475	55	314	1540 + 180N
	480	19.8				
	540	17.8				
250YL - 20A	327.6	18.9	1475	37	286	1540 + 180N
	436.8	16.4				
	491.4	14.7				
250YL - 32	360	35.5	1475	75	346	1600 + 180N
	480	31.5				
	540	29.1				
250YL - 32A	327.6	29.4	1475	55	315	1600 + 180N
	436.8	26.1				
	491.4	24.1				
250YL - 40	360	45.6	1475	90	314	1600 + 180N
	480	39.6				
	540	35.6				
250YL - 51	360	58.3	1475	132	314	1800 + 180N
	480	51.4				
	540	46.9				
250YL - 63	360	71	1475	160	346	1850 + 180N
	480	63				
	540	58.2				
300YL - 25	540	31.2	1475	90	374	2050 + 300N
	660	25				
	750	21.4				

YL 型泵续表 1 YL Type Pump Table 1 (continued)

型号 Type	流量 Capacity m ³ /h	扬程 H Head m	转速 n Speed (r/min)	电机 功率 Motor Power N(kw)	叶轮 直径 D (mm)	泵质重 Weight (kg)	型号 Type	流量 Capacity m ³ /h	扬程 H Head m	转速 n Speed (r/min)	电机 功率 Motor Power N(kw)	叶轮 直径 D (mm)	泵质重 Weight (kg)
300YL2 - 64	540 660 750	70.2 63.5 57.2	1475	200	348 385	2250 + 300N	450YL - 43A	1450 1653 1824	41.7 38.9 36.6	980	280	578	3680 + 750N
350YL - 19	750 900 1050	22.2 19.3 16.1	1475	90	334	2300 + 600N	450YL - 43B	1350 1566 1728	37.4 34.9 32.8	980	250	548	3680 + 750N
350YL - 19A	713 855 998	20 17.4 14.5	1475	75	317	2300 + 600N	450YL2 - 54	1500 1740 1920	59.6 54.4 50	980	400	552	3800 + 750N
350YL - 30	750 900 1050	33.5 30.2 25.5	1475	160	387	2600 + 650N	450YL2 - 54A	1425 1653 1824	53.8 49.1 45.1	980	355	524	3800 + 750N
350YL - 30A	713 855 998	30.2 27.3 23	1475	132	367	2600 + 650N	500YL - 20	1920 2160 2400	21 20 17.8	980	200	513	3800 + 830N
350YL - 30B	675 810 945	27.1 24.5 20.7	1475	110	348	2600 + 650N	500YL - 20A	1824 2052 2280	19 18.1 16.1	980	185	487	3800 + 830N
350YL - 48	750 900 1050	51.5 47.9 42.5	1475	220	426	2700 + 650N	500YL - 31	1920 2160 2400	34 31.4 28.5	980	315	593	4100 + 830N
350YL - 48A	713 855 998	46.7 43.2 38.4	1475	200	405	2700 + 650N	500YL - 31A	1824 2052 2280	30.7 28.3 25.7	980	280	564	4100 + 830N
350YL - 48B	675 810 945	42 38.8 34.4	1475	185	384	2700 + 650N	500YL - 31B	1728 1944 2160	27.5 25.4 23.1	980	250	534	4100 + 830N
350YL2 - 60	750 900 1050	67 60.4 51	1475	280	387	3250 + 650N	500YL - 50	1920 2160 2400	52.8 49.8 46.1	980	500	654	4300 + 830N
350YL2 - 60A	713 855 998	60.5 54.5 46	1475	250	367	3250 + 650N	500YL - 50A	1824 2052 2280	47.7 44.9 41.6	980	450	622	4300 + 830N
400YL - 25	1050 1320 1500	28.3 25 22	1475	160	380	2700 + 700N	500YL - 50B	1728 1944 2160	42.8 40.3 37.3	980	355	589	4300 + 830N
400YL - 25A	998 1254 1425	25.5 22.6 19.9	1475	132	361	2700 + 700N	500YL2 - 63	1920 2160 2400	68 62.8 57	980	560	593	4700 + 830N
400YL - 39	1050 1320 1500	44.3 39 34.3	1475	250	440	3100 + 700N	500YL2 - 63A	1824 2052 2280	61.4 56.7 51.4	980	500	564	4700 + 830N
400YL - 39A	998 1254 1425	40 35.2 31	1475	200	418	3100 + 700N	600YL - 25	2400 3000 3420	29.7 25 21.6	980	315	572	4800 + 695N
400YL - 39B	945 1188 1350	35.9 31.6 27.8	1475	185	396	3100 + 700N	600YL - 25A	2280 2850 3249	26.8 22.6 19.5	980	280	543	4800 + 695N
400YL - 62	1050 1320 1500	68.5 61.9 56.6	1475	355	484	3300 + 700N	600YL - 39	2400 3000 3420	43.9 39 34.3	980	500	662	5340 + 695N
400YL - 62A	998 1254 1425	61.8 55.9 51.1	1475	315	460	3300 + 700N	600YL - 39A	2280 2850 3249	39.6 35.2 31	980	450	629	5340 + 695N
400YL - 62B	945 1188 1350	55.5 50.1 45.8	1475	280	436	3300 + 700N	600YL - 39B	2160 2700 3078	35.5 31.6 27.8	9870	355	596	5340 + 695N
450YL - 17	1500 1740 1920	19.7 17.4 15.7	980	160	477	3280 + 650N	600YL - 62	2400 3000 3420	68.2 62 56.7	980	710	730	5440 + 965N
450YL - 17A	1425 1653 1824	17.8 15.7 14.2	980	132	453	3280 + 650N	600YL - 62A	2280 2850 3249	61.6 56.0 51.1	980	630	694	5440 + 965N
450YL - 27	1500 1740 1920	29.8 27.2 25	980	220	552	3430 + 750N	600YL - 62B	2160 2700 3078	55.3 50.2 45.9	980	560	657	5440 + 965N
450YL - 27A	1425 1653 1824	26.9 24.5 22.6	980	185	524	3430 + 750N	700YL - 20	3420 3900 4380	22.6 20.3 17.9	735	400	825	
450YL - 27B	1350 1566 1728	24.1 22.0 20.3	980	160	497	3434 + 750N	700YL - 20A	3249 3705 4161	20.4 18.3 16.2	735	315	784	
450YL - 43	1500 1740 1920	46.2 43.1 40.5	980	315	609	3680 + 750N							



FY Series Corrosive Vertical Submerged Pump

概述

FY 型耐腐蚀立式液下泵是一种单级单吸长轴式液下离心泵,其标记、额定性能点和法兰连接尺寸等效采用 ISO2858 国际标准、技术条件采用 ISO5199 标准。与原 FY 型耐腐蚀液下泵相比,具有体积小、效率高、节能效果好,运行可靠等优点。适用于输送稍含固体颗粒、磨料的腐蚀性介质。

泵的输送温度一般为 $0 \sim 105^{\circ}\text{C}$ 。温度在 $-20 \sim 0^{\circ}\text{C}$ 、 $105 \sim 180^{\circ}\text{C}$ 时可采用保温夹套及冷却夹套,采用低温或高温耐磨导轴承,此类情况用户应说明。

如输送介质有少量固体颗粒,滑动轴承应采用外润滑方式(外接压力大于 0.2MPa 的清水和其它允许的介质),此类情况用户应说明。

泵的工作压力按 1.6MPa 设计。

泵的性能范围:流量为 $1.6 \sim 2600\text{m}^3/\text{h}$,扬程为 $5 \sim 132\text{m}$ 。

根据所输送介质的不同,FY 型立式液下泵接触液体部分的材质可选用铸铁(用符号 H 表示)、铸钢、 $1\text{Cr}18\text{Ni}9\text{Ti}$ (用符号 B 表示)、 $1\text{Cr}18\text{Ni}12\text{Mo}2\text{Ti}$ (用符号 M 表示)、301、304L、316、316L、904、Lewmet 合金、20 号合金等材料制造。

General

FY series corrosive vertical submerged pump is one of single-stage single-suction long-shaft submerged centrifugal pumps. Its marks, performance points and dimension of flange are designed according to International Standard of ISO2858. Its technical conditions are designed according to ISO5199. It has little volume, high efficiency, power saving, operating liability compared with former FY series corrosive vertical submerged pump. It can not pump corrosive medium which has solid particles and wearable materials.

The medium temperature varies from 0°C to 105°C . Heat preservation closed cover and low-temperature wearable guide bearing are used when the temperature of medium is from -20°C to 0°C , cooling closed cover and high-temperature wearable guide bearing are used when the temperature of medium is from 105°C to 180°C . This condition must be stated when ordering.

If medium has little solid particle, sliding bearing should be outer-lubricated bearing, which shall be stated clearly when ordering (water and other allowed medium whose outer pressure is over 0.2MPa).

Operating pressure is designed at 1.6MPa .

Performance range: Capacity: $1.6 \sim 2600\text{m}^3/\text{h}$, head: $5 \sim 132\text{m}$.

The materials contacting with liquid can be selected as cast iron (H), cast steel, $1\text{Cr}18\text{Ni}9\text{Ti}$ (B), $1\text{Cr}18\text{Ni}12\text{Mo}2\text{Ti}$ (M), 304, 304L, 306, 306L, 904, Lewmet Alloy, 20 # Alloy according to different medium.

泵阀系列产品

PUMP AND VALVE SERIES PRODUCTS



FY 型泵性能参数表 FY Type Pump Table of Performance

型号 Model	叶轮型式 Impeller type	泵额定转速 Speed n = 2900r/min								泵额定转速 Speed n = 1450r/min							
		流量 Capacity Q m ³ /h	扬程 Head H m	相对密度 < 1.0 relative density < 1.0		相对密度 < 1.35 relative density < 1.35		相对密度 < 1.86 relative density < 1.86		流量 Capacity Q m ³ /h	扬程 Head H m	相对密度 < 1.0 relative density < 1.0		相对密度 < 1.35 relative density < 1.35		相对密度 < 1.86 relative density < 1.86	
				功率 power KW	电机型号 motor model	功率 power KW	电机型号 motor model	功率 power KW	电机型号 motor model			功率 power KW	电机型号 motor model	功率 power KW	电机型号 motor model	功率 power KW	电机型号 motor model
25FY-20		3.2	20	1.1	Y802-2	1.5	Y90S-2	2.2	Y90L-2	1.6	5	0.75	Y802-4	0.75	Y802-4	1.1	Y90S-4
	A	2.8	16							1.4	4						
25FY-32		2.8	32	3	Y100L-2	3	Y100L-2	4	Y112M-2	1.6	8	1.1	Y90S-4	1.1	Y90S-4	1.5	Y90L-4
	A	2.8	26							1.4	6.5						
25FY-50		3.2	50	5.5	Y132S ₂ -2	7.5	Y132S ₂ -2	11	Y160M1-2	1.6	12.5	1.1	Y90S-4	1.5	Y90L-4	2.2	Y100L ₁ -4 Y90S-4
	A	2.8	41							1.4	10						
25FY-80		3.2	80	7.5	Y132S ₂ -2	11	Y160M ₁ -2	15	Y160M ₂ -2	1.6	20	1.1	Y90S-4	1.5	Y90L-4	2.2	Y100L ₁ -4 Y90S-4
	A	3	70	5.5	Y132S ₂ -2	7.5	Y132S ₂ -2	11	Y160M ₁ -2	1.5	17	1.5	Y90L-4	2.2	Y100L ₁ -4	3	Y100L ₂ -4
	B	2.8	62	4	Y112M-2	5.5	Y132S ₂ -2	11		1.4	15						
40FY-20		6.3	20	1.5	Y90S-2	2.2	Y90L-2	3	Y100L-2	3.2	5	0.75	Y802-4	0.75	Y802-4	1.1	Y90S-4
	A	5.5	16							2.8	4						
40FY-32		6.3	32	3	Y100L-2	3	Y100L-2	4	Y112M-2	3.2	8	1.1	Y90S-4	1.1	Y90S-4	1.5	Y90L-4
	A	5.5	26							2.8	6.5						
40FY-50		6.3	50	5.5	Y132S ₂ -2	7.5	Y132S ₂ -2	11	Y160M1-2	3.2	12.5	1.1	Y90S-4	1.5	Y90L-4	2.2	Y100L ₁ -4
	A	5.5	41							2.8	10						
40FY-80		6.3	80	7.5	Y132S ₂ -2	11	Y160M ₁ -2	15	Y160M ₂ -2	3.2	20	1.5	Y90L-4	2.2	Y100L ₁ -4	3	Y100L ₂ -4
	A	5.9	70	5.5	Y132S ₂ -2	7.5	Y132S ₂ -2	11	Y160M1-2	2.9	17						
50FY-20		12.5	20	1.5	Y90S-2	2.2	Y90L-2	3	Y100L-2	6.3	5	0.75	Y802-4	0.75	Y802-4	1.1	Y90S-4
	A	11.3	16.4							5.7	4.1						
50FY-32		12.5	32	3	Y100L-2	4	Y112M-2	5.5	Y132S1-2	6.3	8	1.1	Y90S-4	1.1	Y90S-4	1.5	Y90L-4
	A	11.3	26.4	2.2	Y90L-2	3	Y100L-2	4	Y112M-2	5.7	6.6						
50FY-50		12.5	50	5.5	Y132S ₂ -2	7.5	Y132S ₂ -2	11	Y160M1-2	6.3	12.5	1.1	Y90S-4	1.1	Y90S-4	1.5	Y90L-4
	A	11.3	41	4	Y112M-2	5.5	Y132S ₂ -2	7.5	Y132S2-2	5.7	10.3						
50FY-80		12.5	80	11	Y160M ₁ -2	15	Y160M ₂ -2	18.5	Y160L-2	6.3	20	1.5	Y90L-4	2.2	Y80L-4	2.2	Y100L ₁ -4
	A	11.7	70	11	Y160M ₁ -2	15	Y160M2-2	5.7	17.5								
	B	11	62	7.5	Y132S ₂ -2	11	Y160M ₁ -2	15	Y160M2-2	5.7	17.5						
65FY-20		25	20	3	Y100L-2	4	Y112M-2	5.5	Y132S1-2	12.5	5	0.75	Y802-4	0.75	Y802-4	1.1	Y90S-4
	A	22.7	16.5	2.2	Y90L-2	3	Y100L-2	4	Y112M-2	11.3	4.1	0.75					
65FY-32		25	32	5.5	Y132S ₂ -2	5.5	Y132S ₂ -2	7.5	Y132S2-2	12.5	8	0.75	Y802-4	0.75	Y802-4	1.1	Y90S-4
	A	22.7	26.5	4	Y112M-2	4	Y112M-2	5.5	Y132S1-2	11.3	6.6	0.75					
65FY-50		25	50	11	Y160M ₁ -2	11	Y160M ₁ -2	15	Y160M2-2	12.5	12.5	1.1	Y90S-4	1.5	Y90L-4	2.2	Y100L ₁ -4
	A	22.7	41	7.5	Y132S ₂ -2	7.5	Y132S ₂ -2	11	Y160M1-2	11.3	10.3	1.1	Y90S-4	1.1	Y90S-4	1.5	Y90L-4
65FY-80		25	80	15	Y160M ₂ -2	18.5	Y160L-2	22	Y180M-2	12.5	20	2.2	Y100L ₁ -4	3	Y100L ₂ -4	4	Y112M-4
	A	23.4	74.8	15	Y160M ₂ -2	18.5	Y160L-2	22	Y180M-2	11.7	17.5						
	B	22	61.8	11	Y160M ₁ -2	11	Y160M ₁ -2	15	Y160L-2	11.7	17.5						

FY 型泵续表 1 FY Type Pump Table 1 (continued)

型号 Model	叶轮型式 Impeller type	泵额定转速 Speed n = 2900r/min								泵额定转速 Speed n = 1450r/min							
		流量 Q Capacity m ³ /h	扬程 H Head m	相对密度 < 1.0 relative density < 1.0		相对密度 < 1.35 relative density < 1.35		相对密度 < 1.86 relative density < 1.86		流量 Q Capacity m ³ /h	扬程 H Head m	相对密度 < 1.0 relative density < 1.0		相对密度 < 1.35 relative density < 1.35		相对密度 < 1.86 relative density < 1.86	
				功率 power KW	电机型号 motor model	功率 power KW	电机型号 motor model	功率 power KW	电机型号 motor model			功率 power KW	电机型号 motor model	功率 power KW	电机型号 motor model	功率 power KW	电机型号 motor model
80FY-20		50	20	5.5	Y132S ₁ -2	5.5	Y132S ₁ -2	7.5	Y132S ₂ -2	25	5	0.75	Y802-4	0.75	Y802-4	1.1	Y90S-4
	A	45.3	16.5							22.6	4.1					0.75	Y802-4
80FY-32		50	32	7.5	Y132S ₂ -2	11	Y160M ₁ -2	15	Y160M ₂ -2	25	8	1.5	Y90L-4	1.5	Y90L-4	2.2	Y100L ₁ -4
	A	45.4	26.4			7.5	Y132S ₁ -2	11	Y160M ₁ -2	22.7	6.6	1.1	Y90S-4	1.1	Y90S-4	1.5	Y90L-4
80FY-50		50	50	15	Y160M ₂ -2	15	Y160M ₂ -2	22	Y180M-2	25	12.5	2.2	Y100L ₁ -4	2.2	Y100L ₁ -4	3	Y100L ₂ -4
	A	45.3	41	11	Y160M ₁ -2			18.5	Y160L-2	22.7	10.3	1.5	Y90L-4			2.2	Y100L ₁ -4
80FY-80		50	80	22	Y180M-2	30	Y200L ₁ -2	45	Y225M-2	25	20	3	Y100L ₂ -4	4	Y112M-4	5.5	Y132S-4
	A	46.8	70.5	18.5	Y160L-2	22	Y180M-2	30	Y200L ₁ -2	23.4	17.6	3	Y100L ₂ -4	4	Y112M-4	5.5	Y132S-4
	B	44	62.2	15	Y160M ₂ -2												
100FY-20		100	20	11	Y160M ₁ -2	11	Y160M ₁ -2	15	Y160M ₂ -2								
	A	91.8	16.8	7.5	Y132S ₂ -2			11	Y160M ₁ -2			2.2	Y100L ₁ -4	3	Y100L ₂ -4	4	Y112M-4
100FY-32		100	32	15	Y160M ₂ -2	18.5	Y160L-2	22	Y180M-2	50	8						
	A	91	26.5	11	Y160M ₁ -2	15	Y160M ₂ -2	18.5	Y160L-2	45.5	6.6	1.5	Y90L-4	2.2	Y100L ₁ -4	3	Y100L ₂ -4
100FY-50		100	50	22	Y180M ₂ -2	30	Y200L ₁ -2	37	Y200L ₂ -2	50	12.5	4	Y112M-4	4	Y112M-4	5.5	Y132S-4
	A	91	41.5	18.5	Y160L-2	22	Y180M-2	30	Y200L ₁ -2	45.5	10.3	3	Y100L ₂ -4	3	Y100L ₂ -4	4	Y112M-4
100FY-80		100	80	45	Y225L ₂ -2	45	Y225M-2	75	Y280S-2	50	20	5.5	Y132S-4	7.5	Y132M-4	11	Y160M-4
	A	93.5	70	37	Y200L ₂ -2			55	Y250M-2	45.5	17.4						
	B	87.8	61.7	30	Y200L ₂ -2	37	Y200L-2	45	Y225M-2	43	15	4	Y112M-4	5.5	Y132S-4	7.5	Y132M-4
125FY-12.5										100	12.5	5.5	Y132S-2	7.5	Y132M-4	11	Y160M-4
	A									91	10.3			5.5	Y132S-4	7.5	Y132M-4
125FY-20										100	20	11	Y160M-4				
	A									91	16.5	7.5	Y132M-4	11	Y160M-4	15	Y160L-4
125FY-32										100	32	18.5	Y180M-4	22	Y180L-4	30	Y200L-4
	A									91	25.5	15	Y160L-4	18.5	Y180M-4	30	Y200L-4
125FY-50										100	50			37	Y225S-4	55	Y250M-4
	A									91	41	30	Y200L-4	30	Y200L-4	45	Y225M-4
150FY-20										200	20	18.5	Y180M-4	22	Y180L-4	30	Y200L-4
	A									182	16.5	15	Y160L-4	18.5	Y180M-4	30	Y200L-4

FY 型泵续表 2 FY Type Pump Table 2 (continued)

型号 Model	叶轮型式 Impeller type	泵额定转速 Speed n = 1450r/min								型号 Model	叶轮型式 Impeller type	泵额定转速 Speed n = 1450r/min											
		流量 Q Capacity		扬程 H Head		相对密度 < 1.0 relative density < 1.0		相对密度 < 1.35 relative density < 1.35				相对密度 < 1.86 relative density < 1.86		流量 Q Capacity		扬程 H Head		相对密度 < 1.0 relative density < 1.0		相对密度 < 1.35 relative density < 1.35		相对密度 < 1.86 relative density < 1.86	
		m ³ /h	m	功率 power KW	电机型号 motor model	功率 power KW	电机型号 motor model	功率 power KW	电机型号 motor model			功率 power KW	电机型号 motor model	m ³ /h	m	功率 power KW	电机型号 motor model	功率 power KW	电机型号 motor model	功率 power KW	电机型号 motor model	功率 power KW	电机型号 motor model
150FY-32		200	32	30	Y200L-4	37	Y225S-4	45	Y225M-4	300FY-45		1000	44	160	Y315M ₂ -4	220				315			
	A	182	25.5	22	Y180L-4	30	Y200L-4	37	Y225S-4		A	900	38	132	Y315M ₁ -4	200	Y315L-4	250					
150FY-50		200	50	55	Y250M-4	75	Y280S-4		75	Y280S-4	350FY-40	B	850	30	110	Y315S-4	132	Y315M ₁ -4	200	Y315L-4	200	Y315L-4	
	A	182	41	37	Y225S-4	45	Y225M-4						1500	40	200	Y315L-4	280		355				
200FY-20		400	20	37	Y225S-4	45	Y225M-4	75	Y280S-4	400FY-80	A	1400	30	160	Y315M ₂ -4	220				315			
	A	360	16.2	30	Y200L-4	30	Y200L-4	45	Y225M-4		B	1300	25	132	Y315M ₁ -4	200				250			
200FY-32		400	32	55	Y250M-4	75	Y280S-4	90	Y280M-4	400FY-100	C	1300	20	110	Y315S-4	160				220			
	A	363	25.5	45	Y225M-4	55	Y250M-4	75	Y280S-4			1240	78	355		450							
200FY-50		400	50	90	Y280M-4	110	Y315S-4	132	Y315M-4	400FY-125	A	1170	75	315		400							
	A	363	41	75	Y280S-4	90	Y280M-4	110	Y315S-4		B	1015	57	250		280							
200FY-80	A	420	80	132	Y315M ₁ -4	160		220	Y355M-4	500FY-80	C	870	42	160		220				315			
	B	400	70	110	Y315S-4	132	Y315M ₂ -4	200	Y315L-4			1340	104	500									
	B	360	65								A	1250	97	450									
250FY-12		600	12	30	Y200L-4	37	Y225S-4	55	Y250M-4	500FY-100	B	1140	77	355									
	A	540	11	22	Y180L-4	30	Y200L-4	45	Y225M-4		C	950	56	230									
250FY-22		650	24	55	Y250M-4	75	Y280S-4	110	Y315S-4	500FY-125	A	1375	125	630									
	A	600	20	37	Y225S-4	45	Y225M-4	75	Y280S-4		B	1170	100	500									
250FY-50		650	52	132	Y315M ₁ -4	160	Y315M ₂ -4	220	Y355M-4	500FY-150	C	950	75	315									
	B	550	16	37	Y225S-4	45	Y225M-4	75	Y280S-4			1070	74	560									
250FY-80	A	550	45	90	Y280M-4	132	Y315M ₁ -4	160	Y315M ₂ -4	500FY-175	A	1800	70	500									
	B	500	40	75	Y280S-4	110	Y315S-4	160			B	1520	52	315									
	C	450	30	55	Y250M-4	75	Y280S-4	110	Y315S-4		C	1300	38	220									
300FY-22		800	32	250				450		500FY-200		2040	98	800									
	A	770	76								A	1950	91	630									
	B	700	58	160	Y315M ₂ -4	220		315			B	1760	74	500									
300FY-45		950	22	75	Y280S-4	110	Y315S-4	160	Y315M ₂ -4	500FY-225	C	1500	54	315									
	A	900	20	90	Y280M-4	132	Y315M ₁ -4					2390	125	1250									
	B	800	16	55	Y250M-4	75	Y280S-4	110	Y315S-4		A	2280	117	1000									

说明: 1、大于等于 200kw 电机根据用户要求可以选择 380V、6000V 电机,具体型号根据用户要求选择。

2、表中电机型号仅供参考,用户可以根据要求选择同等功率的电机,电机可以是防爆或不防爆的。

Notice: 1. For motor with of 200kw or above, we can choose 380V or 6000V motors as per your requirements. The actual mode will be the user's option.

2. The motor models listed in the table are for reference only. The user can choose equivalent motor. The motor can be explosion proof type or not explosion proof type.

泵阀系列产品

PUMP AND VALVE SERIES PRODUCTS



FYSM 型液下泵
FYSM Series Submerged Pump

概述

FYSM 型系列化工液下泵是立式单级单吸离心泵。用于输送含有固体颗粒和不易结晶的有腐蚀液体。被输送介质温度 $-20^{\circ}\text{C} - 150^{\circ}\text{C}$ 。特殊需要时可为 $-50^{\circ}\text{C} - 150^{\circ}\text{C}$ 。液下泵工作部分淹没在液体内，轴封无泄漏现象。且占地面积小，使用可靠，维修方便，耐腐蚀性能强等特点。广泛适用于化工、石油等工业部门。

General

FYSM serial chemical submerged single-priming, single-stage centrifugal pump can be used to deliver corrosive liquid containing solid particle under the temperature $-20^{\circ}\text{C} \sim 150^{\circ}\text{C}$ ($-50^{\circ}\text{C} \sim 150^{\circ}\text{C}$ under special circumstance). Operation section of submerged pump is partially immersed the liquid without leakage of the shaft seal. Because of the features that small occupied space, reliable usage, convenient maintenance and strong corrosive resistance, this serial pump can be widely used in the fields of chemical industry and petroleum.

FYSM 型泵性能参数表 FYSM Type Pump Table of Performance

序号 Serial No.	型号 Specification	转速 Rotating speed n		流量 Flow capacity Q		扬程 Delivery lift H	效率 Efficiency η	液体比重 Specific gravity of the liquid = 1.00	转速 Rotating speed n		流量 Flow capacity Q		扬程 Delivery lift H	效率 Efficiency η	液体比重 Specific gravity of the liquid = 1.00
		r/min	m ³ /h	L/S	m ³ /h				L/S	r/min	m ³ /h	L/S			
1	25FYSM-41	2960	3.6	1	41	16	4	1430	1.8	0.5	10	14	1.1		
2	25FYSM-25				25	21	2.2				6.3	18	0.75		
3	25FYSM-16				16	22	1.5				3.9	20	0.55		
4	40FYSM-40		7.2	2	40	31	5.5		14	3.6	1	9.9	27	1.1	
5	40FYSM-26				26	35	3					6.4	32	0.75	
6	40FYSM-16				16	40	2.2					3.9	37	0.55	
7	50FYSM-40		14.4	4	40	42	5.5		14	7.2	2	9.9	27	1.1	
8	50FYSM-25				25	50	4					6.3	45	1.1	
9	50FYSM-16				16	53	3					3.9	48	0.75	
10	65FYSM-40		28.8	8	40	52	11		14	14.4	4	9.9	48	2.2	
11	65FYSM-25				25	55	5.5					6.3	50	1.1	
12	65FYSM-16				16	58	4					3.9	55	1.1	
13	80FYSM-38		54	15	38	62	18.5		14	27	7.5	9.5	55	4	
14	80FYSM-24				24	65	11					6.0	60	2.2	
15	80FYSM-15				15	66	7.5					3.8	61	2.2	
16	100FYSM-57	100.8	28	57	63	37	14	50.4	14	14.3	62	7.5			
17	100FYSM-37			37	69	22				9.1	65	5.5			
18	100FYSM-23			23	70	18.5				5.6	67	4			
19	150FYSM-35	1480	190.8	53	35	72	45	980	126.3	35.1	15.2	68			
20	150FYSM-22				22	72	30				9.6	68			
21	200FYSM-34				360	100	34				72	45		14.7	68
22	200FYSM-21						21				73	37		9.2	69

注：1、表列数据是常温时清水的性能，选用时按实际换算。2、液下深度（也称接管长度）。根据用户自选。

Note: 1) The values shown in the table indicate the characters of clean water at normal temperature.

2) The depth under liquid can be determined by customers.



HYF系列氟塑料增强合金液下泵
HYF Series Fluorine Plastic Enhanced Alloy Submersible Pump

概述

HYF 型系列化工液下泵是立式单级单吸离心泵。用于输送不含固体颗粒和不易结晶的有腐蚀性液体(特殊定制可输送微量结晶液体)。被输送介质温度 -20℃ ~ 200℃。液下泵工作部分淹没在液体内,轴封无泄漏现象。且占地面积小,使用可靠,维修方便,耐腐蚀性能强等特点。广泛适用于化工、制药、造纸、石油等工业部门。

General

HYF series chemical submersible pump is vertical single-stage single-suction centrifugal pump. It is used in transporting containing no solid grain no crystal corrosive liquids(it can transport tiny crystal liquids for special made) whose temperature is from -20℃ to 200℃. The operating parts are submerged in liquids, shaft seal has no leakage. It has advantages such as small area, liable usage, convenience repair, strong anti-corrosive. It is widely used in chemical, medical and petro-chemical industry.

HYF 型泵工作性能表 HYF Type Pump Table of Performance

序号 NO.	型号 Model	配用电机型号 Motor Model	流量 Capacity(Q)		扬程 Head (m)	效率(%) Efficiency	转速(n) Speed
			m ³ /h	L ₁ /S			
1	25HYF-41	Y112M ₂ -2B5 4KW	3.6	1	41	16	2900
2	25HYF-25	Y90L-2B5 2.2KW			25	21	
3	25HYF-10	Y90L-2B5 1.5KW			10	22	
4	40HYF-40	Y132S ₁ -2B5 5.5KW	7.2	2	40	31	2900
5	40HYF-26	Y100L-2B5 3KW			26	35	
6	40HYF-16	Y90L-2B5 2.2KW			16	40	
7	50HYF-40	Y132S ₂ -2B5 7.5KW	14.4	4	40	42	2900
8	50HYF-25	Y112M-2B5 4KW			25	50	
9	50HYF-16	Y100L-2B5 3KW			16	53	
10	65HYF-40	Y160M ₁ -2B5 11KW	25	8	40	52	2900
11	65HYF-25	Y132S ₁ -2B5 5.5KW			25	55	
12	65HYF-10	Y112M-2B5 4KW			10	58	
13	80HYF-38	Y160L-2B5 15KW	50	15	38	62	2900
14	80HYF-24	Y160L-2B5 11KW			24	66	
15	80HYF-15	Y132S ₂ -2B5 7.5KW			15	68	
16	100HYF-57	Y200L ₂ -2B5 37KW	100	28	57	63	2900
17	100HYF-37	Y180M-2B5 22KW			37	69	
18	100HYF-23	Y160L-2B5 18.5KW			23	70	

泵阀系列产品

PUMP AND VALVE SERIES PRODUCTS



Model LJYA Phosphoric Liquid Pump
LJYA型磷酸料浆泵

概述

LJYA 系列料浆泵为单级单吸立式悬臂式离心液下泵。叶轮为半开式，叶轮前后均配有耐磨盖，广泛应用于化工流程输送含 30% 以下固体颗粒，粘度低于 200CP 的磨、腐蚀交互作用的介质。特别适用于磷肥工业中输送磷酸、磷铵料浆等介质。

输送介质一般低于 110°C。如需输送更高温度的介质，应考虑用冷却水冷却轴承。

性能范围：流量 $Q = 10 \sim 400 \text{m}^3/\text{h}$ 扬程 $H = 5 \sim 50 \text{m}$ 。

FLX 型系列料浆循环泵为 3~100 万/吨年磷铵工程中的一效二效料浆蒸发浓缩循环的重要配套设备，该泵具有效率高、汽蚀性能好等特点，是取代进口设备的优选产品。该系列泵同时广泛应用于化工、石油、冶金、造纸等其它工业部门。

Summary

Model LJYA series slurry pump is a vertical cantilever – type single – stage – single – suction centrifugal submerged pump. Its blade wheel is a semi – open type. In the front and back of the blade wheel installs an abrasio – resistant cover. The pump is widely used in chemical process for conveying medium containing less than 30% solid granules and with viscosity less than 200cp, which is subject to the interaction of corrosion and abrasion. It is especially suitable for conveying such medium as phosphoric acid, triammonium phosphate slurry, etc. In general, the teperature of the conveying medium is less than 110°C. When conveying medium with higher temperature, the bearing should be cooled with cooling water. Performance scope: flow $Q = 10 \sim 400 \text{m}^3/\text{h}$ Lift $H = 5 \sim 50 \text{m}$

The FLX type series anticipates the syrup circulates to pump to 3~1000000/ year in ton phosphorus ammonium engineering in side of an effect two effects anticipates syrup evaporate concentrated circulate of inportant kit Equipments, should pump to have efficient and high, vapor eclipse function good etc. Characteristics, is Replace the ptimization product that imort the equipments. That series pump is extensive at the same time should Used for the other industry in chemical engineering, petroleum, metallurgy, deckle... etc. Sectopm.

主要制造材料及适用介质：

Main manufacture materials and applicable nedium.

代号 Code	适用介质 Applicable medium
CW – 2(CD4MCu)	适用于稀硫酸、湿法磷酸、磷铵料浆、有色冶金电解液 suitable for diluted sulfuric acid, phosphoric acid by wet process, triammonium phosphate slurry, electrolyte of metllurgy of non – fcrrous metals
904、UB – 6	适用于稀硫酸介质 Suitable for diluted sulfuric acid
CB7Cu	弱腐蚀性砂浆、渣浆及钾肥生产中的光卤石、卤水 Weak corrosive sand slurry, slag slurry, as well as the carnallite and halogen liquid in the production of potassium fertilixers.
316、Mo2Ti	稀硝酸、磷酸、有机酸及含少量硫酸根、氯离子的介质 Diluted nitric acid, phosphoric acid, organic acid and medium containing smal amount of sulfuric acid or chlorion
304、18 – 8	稀硝酸、有机酸 Dilutcd nitric acid, organic acids.

除上述材料外，亦可根据用户需要选用其它材料制造。

Besides the above materials, other manufacture materials can also be chosen according to user's need.

LJYA 型泵性能参数表 LJYA Type Pump Table of Performance

型号 Type	流量(m ³ /h) Capacity	扬程(m) Head	转速(r/min) Speed	配用功率(KW) Motor power
10LJYA18-4	10	18	1450	4
10LJYA30-4	10	30	1450	5.5
15LJYA18-4	15	18	1450	5.5
15LJYA30-4	15	30	1450	7.5
20LJYA25-4	20	25	1450	7.5
27LJYA20-4	27	20	1450	7.5
30LJYA30-4	30	30	1450	11
45LJYA20-4	45	20	1450	15
54LJYA20-6	54	20	980	15
60LJYA20-4	60	20	1450	15
85LJYA25-4	85	25	1450	22
110LJYA25-4	110	25	1450	30
160LJYA32-4	160	32	1450	45
160LJYA32-4A	150	26	1450	37
200LJYA32-4	200	32	1450	55
200LJYA32-4A	180	26	1450	45
300LJYA32-4	300	32	1450	75
300LJYA32-4A	270	26	1450	55
400LJYA32-4	400	32	1450	90
400LJYA32-4A	350	25	1450	75

型号 Type	流量(m ³ /h) Capacity	扬程(m) Head	转速(r/min) Speed	配用功率(KW) Motor power
FLX350	1100	8	980	55-75
FLX400	1800	8	750	90

LSB系列高温浓硫酸液下泵 LSB Series High-Temperature Vitriol Pump



概述

为适应硫酸生产技术发展的需要，我公司与中国科学院金属研究所、上海交通大学、江苏理工大学一起研制开发了 LSB 系列浓硫酸液下泵，并在若干硫酸厂获得了成功应用，LSB 系列浓硫酸泵具有下列特点：

- 1、研制和选择泵的优秀水力模型，使运转性能稳定，并且高效节能。
- 2、研制和采用国内最先进的耐腐材料，过流部件采用 XY-21、XY-31 合金制造，其余部位采用特种耐蚀铸铁制造，使泵的使用寿命进一步加长。
- 3、广泛吸取国内外硫酸泵结构设计的长处，增加吸入管长度；使泵组的刚性提高、运转平稳可靠。
- 4、本系列泵标准化、通用化程度高、互换性好、拆装维护方便。

General

In order to adapt the development requirement of vitriol produce technology, we have empowered LSB series thick vitriol submersible pump with Metal Graduate School of Chinese Academy of Sciences, Shanghai University of Communication and Jiangsu University. And they are successfully applied in several vitriol factories. They have the following characteristics:

1. Select pump excellent water power model, whose performance stable, high efficiency, saving power.
2. Use national advanced coorsive materials, the parts liquids passed are made up of XY-21 and XY-31 alloys. The rest are made up of special corrosive casting iron, which made pump life lengthen.
3. Widely absorbed the advantages of national and international structure design of vitriol pump, lengthen the length of suction pipe, which advances the rigidity of multi cell pump, pump operates level and reliable.
4. This series pump is high standard and high universal, changeable, convenience assemble, disassemble and repair.

LSB 型泵性能参数表 LSB Type Pump Table of Performance

泵型号 Model	Q	H	N	η	功率 (KW) Power		质量 Weight (kg)
	(m ³ /h)	(m)	(r/min)	(%)	Pa	Par	
25LSB - 40	25	40	2950	60	4.5	11	570
25LSB - 40A	23.7	36	2950	59	3.9	11	570
25LSB - 40B	22.5	32	2950	58	3.4	11	570
25LSB - 40C	21	29	2950	57	2.9	7.5	570
55LSB - 40	55	40	2950	66	9.1	22	630
55LSB - 40A	52	36	2950	65	7.8	18.5	630
55LSB - 40B	49.5	32	2950	64	6.7	15	630
55LSB - 40C	46.7	29	2950	63	5.9	15	630
100LSB - 40	100	40	2950	68	16	37	740
100LSB - 40A	95	36	2950	67	13.9	30	740
100LSB - 40B	90	32	2950	66	11.9	30	740
100LSB - 40C	85	29	2950	65	10.3	30	740
100LSB - 50	100	50	2950	74	18.4	45	735
100LSB - 50A	95.3	45.5	2950	73	16.2	37	735
100LSB - 50B	90.7	41	2950	72	14	37	735
20LSB - 30	20	30	1450	43	3.8	11	730
20LSB - 30A	19	27	1450	42	3.3	11	730
20LSB - 30B	18	24	1450	41	2.9	7.5	730
20LSB - 30C	17	21.5	1450	40	2.5	7.5	730
40LSB - 30	40	30	1450	53	6.2	15	980
40LSB - 30A	38	27	1450	52	5.4	15	980
40LSB - 30B	36	24	1450	51	4.6	11	980
40LSB - 30C	34	21.5	1450	50	4.0	11	980
80LSB - 30	80	30	1450	65	10	30	940
80LSB - 30A	76	27	1450	64	8.7	22	940
80LSB - 30B	72	24	1450	63	7.5	22	940
80LSB - 30C	68	21.5	1450	62	6.4	18.5	940
200LSB - 30	200	30	1450	78	20.9	55	1020

LSB 型泵续表 1 LSB Type Pump Table 1 (continued)

泵型号 Model	Q	H	N	η	功率 (KW) Power		质量 Weight
	(m ³ /h)	(m)	(r/min)	(%)	Pa	Par	(kg)
200LSB - 30A	190	27	1450	77	18.1	45	1020
200LSB - 30B	180	24	1450	76	15.5	37	1020
120LSB - 26	120	26	1450	73	11.6	30	945
120LSB - 26A	114	23.5	1450	72	10.1	22	945
120LSB - 26B	108	21	1450	71	8.7	22	945
120LSB - 26C	102	18	1450	70	7.1	18.5	945
200LSB - 22	200	22	1450	75	16	37	1020
200LSB - 22A	190	21	1450	74	14.7	37	1020
200LSB - 22B	180	17.5	1450	73	11.8	30	1020
250LSB - 38	250	38	1450	82	31.6	75	1020
250LSB - 38A	238	34	1450	81	27.2	75	1020
280LSB - 30	280	30	1450	79	29	75	1020
280LSB - 30A	266	27	1450	78	25	55	1020
280LSB - 30B	252	24	1450	77	21.4	55	1020
360LSB - 30	360	30	1450	80	36.8	90	1590
360LSB - 30A	342	27	1450	79	31.8	75	1590
360LSB - 24	360	24	1450	78	30.2	75	1660
360LSB - 24A	342	21.5	1450	77	26	75	1660
360LSB - 24B	324	19	1450	76	22.1	55	1660
360LSB - 24C	306	17	1450	75	18.9	55	1660
600LSB - 30	600	30	1450	82	59.8	132	2665
600LSB - 30A	570	27	1450	81	51.7	110	2665
600LSB - 30B	540	24	1450	80	44.1	110	2665
600LSB - 30C	510	21	1450	79	36.9	90	2665
780LSB - 30	780	30	1450	75	85	200	3000
780LSB - 30A	740	27	1450	74	73.5	185	3000
780LSB - 30B	702	24.3	1450	73	63.6	160	3000
780LSB - 30C	663	21.7	1450	72	54.4	132	3000



概述

GY 型系列高温熔盐液下泵，是我公司在多年生产的 RY 型熔盐泵基础上根据用户的需要，参考国外同类型产品的结构进行开发设计的 RY 型升级换代产品。

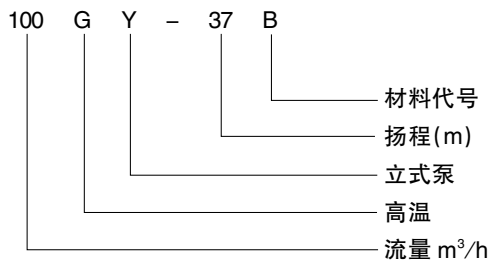
GY 系列较替代产品 RY 型熔盐泵产品系列更完善，使用寿命更长，并从单一的熔盐输送，进而转化为除熔盐外，同时可作为高温化工物料的输送，**介质使用温度 < 540℃**。

GY 系列在设计上充分考虑了传动部位的冷却，输送介质饱和和蒸汽的密封等工况条件，对原 RY 型泵结构作了大量的改进并通过试验进行验证；

- 1、轴承部位设有冷却装置，使轴承工作环境不受高温介质的影响。
- 2、冷却水与轴直接接触，介质的**高温不会因轴而传递到转动部份**。
- 3、独特的结构，确保冷却水绝对不进入介质。
- 4、无须维修耐高温的密封装置，使被输送介质的饱和蒸汽不致于逸出，（特别在输送熔融盐的工况，即使少量的亚硝酸盐饱和蒸汽也对人体有害，致癌。）

多种耐高温、耐腐蚀耐磨材料的组合，使 GY 系列高温液下泵不但适用于如：膜式法固碱，有机氟裂解使用的二元、三元组份的熔盐，也可使用于磷肥、石油裂解等装置的高温流体输送。由于彻底杜绝了热量传至传动部位，因此 GY 系列泵较同类型高温液下泵（熔盐泵）寿命大大提高。

型号意义



General

Next pump in liquid in fusil hydrochloric in series heat in GY type, is RY my factory to produce at many year in the type fusil hydrochloric pump foundation according to the demand of the customer, consult abroad of the same kind type product of The construction proceeds the RY type that develop the design promotes to higher grade to change the on behalf product.

The series of GY than act for the product RY type fusil hydrochloric pump product line more perfect. The service life is more long. combining to transport from the single the salt of fusilth, then converting in to divided by the fusil hydrochloric Salt outside, can be used as at the same time the heat chemical engineering material transport.

The series of GY considers to spread the cooling that move the part well on the design, transporting Lying the saturated steam in quality seals completely to wait the work circumstances term, making to the original RY type pump construction A flood of improvement and pass to experiment the proceeding verification:

1. the bearings part establishes the cooling device, making bearings work environment not summit to and high The temperature lies the influence of the quality.
2. cool off the water to get in touch with stalk directly, lie the heat of the quality can't spread because of stalk Pass to turn to move the part.
3. special construction, insure cooling water absoluteness not enter to lie the quality.
4. need not to maintain to bear the heat seal completely the device, making is transported to lie the quality satisfied Divert unlikely with the steam, (special at work circumstances that transport the meltdown salt, even The saturated steam in a little amount and second nitrate also is harmful to the human body, cancer - causing.)

The variety bears the heat and bear the corrosion bears the combination that what the material, making next pump in GY series heat liquid been applicable to not only such as: film type method solid alkali, the organism fluorin break lies two dollars, three dollar a heat for of the fusil hydrochloric, and also can using in phosphate fertilizer, petroleum break solution etc. device fluid of the usage transports. Because eradicating completely thoroughly the calories spreads to spread to move the part, for this reason GY series pump than the next pump (fusil hydrochloric pump) in liquid in heat in type in of the same kind life span increases consumedly.

Meaning of model code

B - Material code number 37 - capacity (m)
Y - upright pump G - heat 100 - head m³/h

GY 型泵性能参数表 GY Type Pump Table of Performance

型号 Model	流量 (m ³ /h) Capacity	扬程 m Head	转速 r/min Speed	配用功率 kw Motor power
10GY20	10	20	1450	7.5
10GY60	10	60	1450	15
20GY20	20	20	1450	11
20GY30	20	30	1450	11
30GY30	30	30	1450	18.5
40GY30	40	30	1450	18.5
50GY25	50	25	1450	18.5
50GY40	50	40	1450	37
65GY50	65	50	1450	45
100GY37	100	37	1450	45
100GY60	100	60	1450	75
120GY32	120	32	1450	45
150GY25	150	25	1450	75
150GY35	150	25	1450	75
200GY20	200	20	1450	75
200GY60	200	60	1450	132
260GY60	260	60	1450	160
360GY37	360	37	1450	132
420GY40	420	40	1450	200
500GY40	500	40	1450	250

PNL系列泥浆泵 Model PNL Slurry Pump



概述

PNL 型泵为立式单级单吸泥浆泵，适用于输送含固体颗粒的液体，广泛适用在火电厂水力除灰，选矿厂精矿，尾矿输送领域，输送最大重量浓度为 50 – 60%。

Brief Introduction

Type PNL pump is vertical single – stage and single – suction dredge pump, which applies to pump the liquid containing solid particle, such as ash removing by waterpower for thermal power factory, concentrate for ore dressing plant. The max. weight concentration is 50 – 60% .

PNL 型泵性能参数表 PNL Type Pump Table of Performance

型号 Type	流量 Capacity		扬程 Head (m)	转速 Speed (r/min)	功率 Motor (kw)		效率 Eff. η %	叶轮直径 D2 (mm)	泵重量 Weight (kg)
	m ³ /h	L/s			轴功率 Shaft power	电机功率 Motor power			
3PNL	54	15	26	1450	12	22	32	300	450
	108	30	21		14.7		42		
	151	42	15.5		16.7		37		
2PNL	30	8.33	22	1450	5.45	11	33	265	150
	47	13.05	19		6.25		39		
	58	16.1	17		6.9		39		
8PNL	550	152.8	63	980	155	210	61	635	4000
10PNL	1030	286.1	88	980	489	780	50.5	750	4600
250PNL (II)	1040	288.9	75	740	317.2	570	67	900	6500(8000)
250PNL (II)	1040	288.9	90	740	380	570	67	965	6500(8000)
250PNL (II)	830	230.6	57	590	194	310	67	965	6500(8000)
250PNL (II)	1000	333.3	68	740	276.5	475	67	850	6500(8000)
250PNL (II)	800	222.2	44	590	143	360	67	850	6500(8000)

泵阀系列产品

PUMP AND VALVE SERIES PRODUCTS



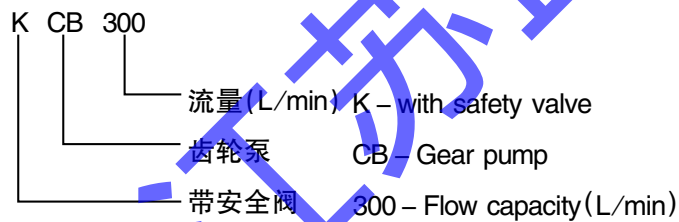
KCB、2CY型
齿轮式输油泵



概述

本泵适用于输送各种有润滑体的液体，温度不高于70℃，如需高温200℃，同本单位联系可配用耐高温材料即可，粘度为 $5 \times 10^{-5} \sim 1.5 \times 10^{-3} \text{m}^2/\text{s}$ 。本泵不适用于输送腐蚀性的、含硬质颗粒或纤维的、高度挥发或闪点低的液体，如汽油、苯等。

型号意义



Summary

The pump is appropriate to convey diverse lubricants with temperature less than 70℃, if temperature up to 200℃ required, heat resistant material has to be matched with viscosity $5 \times 10^{-5} \sim 1.5 \times 10^{-3} \text{m}^2/\text{s}$. This pump is inappropriate to convey corrosive, volatile and low flash point liquid with solid particle or fiber contained, as gasoline, benzene.

Meaning of model code

性能参数表 Table of Property Parameters

型号 Type	口径 Diameter	流量 Capacity (L/min)	排出压力 Exhaust pressure (Mpa)	吸程 Suction distance (m)	电机功率 Motor power (kw)
KCB - 18.3 2CY - 1.1/14.5-2	3/4"	18.3	14.5	5	1.5
KCB - 33.3 2CY - 2/14.5/2	3/4"	33.3	14.5	5	2.2
KCB - 55 2CY - 3/3.3-2	1"	55	0.33	5	1.5
KCB - 55 2CY - 3/3.5-2	1"	55	0.50	5	2.2
KCB - 83.3 2CY - 5/3.3-2	1 1/2"	83.3	0.33	5	2.2
KCB - 83.3 2CY - 5/5-2	1 1/2"	83.3	0.50	5	2.2
KCB - 200 2CY - 8/3.3-2	2"	200	0.33	5	3
KCB - 200 2CY - 12/1.3-2	2"	200	0.33	5	4
KCB - 200 2CY - 12/3.5-2	2"	200	0.33	5	4
KCB - 200 2CY - 12/6-2	2"	200	0.33	5	5.5
KCB - 200 2CY - 12/10-2	2"	200	0.33	5	5.5
KCB - 200 2CY - 12/3.6-2	2 1/2"	200	0.33	5	7.5
KCB - 300 2CY - 18/3.6-2	3"	300	0.33	5	5.5
KCB - 300 2CY - 18/6-2	3"	300	0.33	5	7.5
KCB - 483.3 2CY - 29/3.6-2	3"	483.3	0.33	5	7.5
KCB - 483.3 2CY - 29/3.6-2	3"	483.3	0.33	5	11
KCB - 633 2CY - 38/2.8-2	4"	633	0.28	5	11
KCB - 633 2CY - 38/8-2	4"	633	0.28	5	22
KCB - 960 2CY - 60/3-2	4"	960	0.3	5	18.5
KCB - 960 2CY - 60/6-2	4"	960	0.3	5	30
KCB - 1667 2CY - 100/3-2	6"	1667	0.3	5	30
KCB - 1667 2CY - 100/6-2	6"	1667	0.6	5	55
KCB - 2000 2CY - 120/3-2	6"	2000	0.3	5	30
KCB - 2000 2CY - 100/6-2	6"	2000	0.6	5	55
KCB - 2500 2CY - 150/3-2	6"	2500	0.3	5	37
KCB - 2500 2CY - 150/7-2	6"	2500	0.7	5	75
KCB - 3000 2CY - 180/6-2	10"	3000	0.6	5	110
KCB - 3800 2CY - 230/6-2	10"	3800	0.6	5	110
KCB - 4100 2CY - 250/6-2	10"	4100	0.6	5	90
KCB - 5400 2CY - 320/6-2	10"	5400	0.6	5	110



GLB(GJB)系列高效节能自控自吸泵
GLB(GJB) series of self-priming pumps

概述

GLB(GJB)系列高效节能自控自吸泵是我公司积极响应并贯彻执行国家节能减排的方针和产业政策，并适应市场需要，联合中国科学院、江苏理工大学流体机械研究所、上海水泵研究所等科研部门共同研制开发的一种新型高效节能新产品。

产品原理：

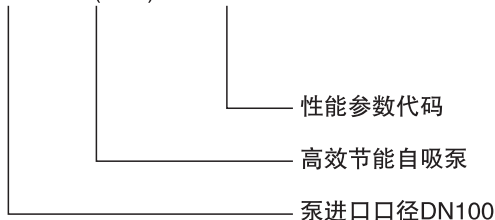
GLB(GJB)系列自吸泵是我公司在普通自吸泵的基础上优化升级，并设计增加智能自控装置研制而成的一种新型高效节能具有国际先进水平的优特产品。工作时该水泵能迅速将吸管内或介质中析出的气体与输送介质分离，从水泵的蜗壳内快速排出，在智能装置的作用下，水泵启动后立即出水，能够使水泵达到排气与出水同步工作。

产品用途：

GLB(GJB)系列高效节能自吸泵是长轴液下泵、立式长轴泵、潜污泵、普通自吸泵及卧式离心泵的理想替代产品，该产品广泛适用于钢铁、化工、石油、电力、冶金、环保、建筑、污水处理、制药，自来水等领域，因独特的叶轮结构和无须引流的自吸功能，可输送各种浓度的酸、碱、盐、废水及污水等介质，并可根据用户不同的介质及工况要求进行特殊材质设计、生产、制造。

型号意义

100 GLB(GJB) - B3



性能参数代码 Performance parameter code
 高效节能自吸泵 High-efficiency energy-saving self-priming pump
 泵进口口径DN100 Pump inlet caliber DN100

General

GLB (GJB) series of self-priming pumps with high efficiency, energy saving and self-control are a new type of high efficiency and energy saving pumps developed by our company in conjunction with the scientific research departments of the Chinese Academy of Sciences, the Institute of Fluid Machinery of Jiangsu University of Technology and the Shanghai Pump Research Institute. The product has won the national utility model patent.

Product principle:

GLB (GJB) series self-priming pump is a new type of high-efficiency, energy-saving and international advanced product developed by our company on the basis of ordinary self-priming pump optimization and upgrading, and design and increase intelligent self-control device. When working, the pump can quickly separate the gas released from the suction pipe or medium from the conveying medium, and expel it from the volute of the pump. Under the action of intelligent device, the pump can discharge water immediately after starting, so that the pump can work synchronously with the exhaust and outlet.

Product uses:

GLB (GJB) series high-efficiency energy-saving Self-priming pumps are ideal substitutes for long-axis submerged pumps, vertical long-axis pumps, submersible sewage pumps, ordinary Self-priming pumps and horizontal centrifugal pumps. They are widely used in iron and steel, chemical industry, petroleum, power, metallurgy, environmental protection, construction, sewage treatment, pharmaceuticals, tap water and other fields due to their unique impeller structure. Without the self-priming function of drainage, it can transport various concentrations of acid, alkali, salt, waste water and sewage, and can design, produce and manufacture special materials according to different media and working conditions of users.

Model No. instruction

泵阀系列产品

PUMP AND VALVE SERIES PRODUCTS



性能参数表 Table of Property Parameters

型号 Model	类别代码 Type code	材质代码 Material	流量 Capacity m ³ /h	总扬程 Total lift m	电机功率 Motor power KW	轴功率 Shaft power KW	效率 Efficiency %	转速 Speed r/min	允许吸深 Permissible suction depth m
50GLB(GJB)-A ₁	S.G.	T.G.BXG	14	14.3	1.5	1.01	54	2840	4
			11	16		0.9	57		
			7	17		0.78	47		
50GLB(GJB)-A ₂	S.G.	T.G.BXG	7.5	19	1.5	1.14	35	2840	4
			6.3	20		1.07	32		
			3.75	20.5		0.91	23		
50GLB(GJB)-A ₃	S.G.	T.G.BXG	13	21	1.5	1.51	48	2840	4
			10	23		1.33	47		
			7.1	24		1.16	40		
50GLB(GJB)-A ₄	S.G.	T.G.BXG	15	18.5	2.2	1.51	50	2840	4
			12.5	20		1.36	50		
			7.5	22		0.96	47		
50GLB(GJB)-B ₁	S.G.	T.G.BXG	15	29	4	2.57	46	2880	4
			12.5	32		2.47	44		
			7.5	34.3		1.59	44		
50GLB(GJB)-B ₂	S.G.	T.G.BXG	13	35	4	2.94	42	2880	4
			10	38		2.52	44		
			7.1	39		2.15	35		
50GLB(GJB)-B ₃	S.G.	T.G.BXG	14	43	5.5	3.82	43	2890	4
			11	44		3.07	43		
			8	44.7		2.63	37		
50GLB(GJB)-C ₁	S.G.	T.G.BXG	15	48	5.5	3.95	51	2900	4
			12.5	50		3.54	48		
			7.5	52.5		2.82	38		
50GLB(GJB)-C ₂	S.G.	T.G.BXG	13	56	7.5	5.36	37	2900	4
			10	60		4.81	34		
			7.1	61.5		4.1	29		
50GLB(GJB)-C ₃	S.G.	T.G.BXG	15	78.5	11	7.83	41	2900	5
			12.5	80		7.16	38		
			7.5	82		5.87	28.5		
65GLB(GJB)-A ₄	S.G.	T.G.BXG	28	13.5	2.2	1.66	62	2900	4
			22	16		1.52	63		
			16	17.5		1.23	62		
65GLB(GJB)-A ₂	S.G.	T.G.BXG	15	19.4	3	1.65	48	2900	4
			12.5	20		1.48	46		
			7.5	21		1.23	35		
65GLB(GJB)-A ₃	S.G.	T.G.BXG	30	18.5	4	2.43	62	2900	4
			25	20		2.16	63		
			15	21.8		1.65	54		
65GLB(GJB)-A ₄	S.G.	T.G.BXG	26	20.6	4	2.39	61	2900	4
			20	24		2.25	58		
			14	26		1.77	56		
65GLB(GJB)-A ₅	S.G.	T.G.BXG	28	23.5	5.5	3.05	59	2900	4
			22	28		2.99	56		
			16	30		2.61	51		
65GLB(GJB)-A ₆	S.G.	T.G.BXG	15	31.7	5.5	3.16	41	2900	4
			12.5	32		2.94	37		
			7.5	32.3		2.63	25		
65GLB(GJB)-B ₁	S.G.	T.G.BXG	30	30	5.5	3.71	65	2900	4
			25	32		3.35	66		
			15	35		2.65	54		
65GLB(GJB)-B ₂	S.G.	T.G.BXG	26	34.5	5.5	4.3	57	2900	4
			20	38		3.76	55		
			14	40		2.93	52		
65GLB(GJB)-B ₃	S.G.	T.G.BXG	28	41	7.5	5.48	57	2900	4
			22	44.2		4.82	55		
			16	46.2		3.87	52		

泵阀系列产品

PUMP AND VALVE SERIES PRODUCTS



性能参数表 Table of Property Parameters

型号 Model	类别代码 Type code	材质代码 Material	流量 Capacity m ³ /h	总扬程 Total lift m	电机功率 Motor power KW	轴功率 Shaft power KW	效率 Efficiency %	转速 Speed r/min	允许吸深 Permissible suction depth m
65GLB(GJB)-B ₄	S.G.	T.G.BXG	12	50.5	5.5	3.74	44	2900	4
			10	51.5		3.42	41		
			8	52.5		3.05	37.5		
65GLB(GJB)-B ₅	S.G.	T.G.BXG	30	47	7.5	6.29	61	2900	4
			25	50		5.67	60		
			15	53		4.42	49		
65GLB(GJB)-C ₁	S.G.	T.G.BXG	26	56	11	7.6	52	2900	5
			20	60		6.95	47		
			14	61		5.53	42		
65GLB(GJB)-C ₂	S.G.	T.G.BXG	28	68	15	10.16	51	2900	5
			22	70		8.92	47		
			16	71.4		7.4	42		
65GLB(GJB)-C ₃	S.G.	T.G.BXG	30	78	15	12.02	53	2900	5
			25	80		10.9	50		
			15	82		9.05	37		
65GLB(GJB)-C ₄	S.G.	T.G.BXG	20	80	15	11.7	37	2900	5
			18	90		11.6	38		
			12.6	100		11.4	30		
65GLB(GJB)-C ₅	S.G.	T.G.BXG	26	92	22	17.6	37	2900	5
			20	100		14.3	38		
			14	110		13.6	30		
80GLB(GJB)-A ₁	S.G.	T.G.BXG	56	13.5	4	3.03	68	1450	4
			44	16		2.66	72		
			32	18		2.34	67		
80GLB(GJB)-A ₂	S.G.	T.G.BXG	60	18	5.5	3.98	74	1450	4
			50	20		3.36	75		
			30	22.5		2.87	64		
80GLB(GJB)-A ₃	S.G.	T.G.BXG	56	25	5.5	5.37	71	2900	4
			44	18		4.79	70		
			32	30		4.02	65		
80GLB(GJB)-B ₁	S.G.	T.G.BXG	60	29	7.5	6.59	72	2900	4
			50	32		5.97	73		
			30	36		4.82	61		
80GLB(GJB)-B ₂	S.G.	T.G.BXG	52	33	11	8.19	57	2900	4
			40	38		8.59	58		
			28	40.5		6.17	46		
80GLB(GJB)-B ₃	S.G.	T.G.BXG	56	40	11	8.97	68	2900	5
			44	44		8.24	66		
			32	47		7.18	57		
80GLB(GJB)-C ₁	S.G.	T.G.BXG	30	58	15	9.4	54	2900	5
			22	61		7.45	49		
			16.5	62		6.65	44		
80GLB(GJB)-C ₂	S.G.	T.G.BXG	52	53	15	11.73	64	2900	5
			40	60		11.6	61		
			28	63		8.74	55		
80GLB(GJB)-C ₃	S.G.	T.G.BXG	56	64	18.5	15.5	63	2900	5
			44	70		14.72	57		
			32	73		12.01	53		
80GLB(GJB)-C ₄	S.G.	T.G.BXG	60	75	22	19.2	64	2900	5
			50	80		17.3	63		
			30	84		13.2	52		
80GLB(GJB)-D ₁	S.G.	T.G.BXG	46.8	80	22	20.4	50	2900	5
			36	85		16.4	51		
			25.2	90		13.7	45		
80GLB(GJB)-D ₂	S.G.	T.G.BXG	52	97	30	27.5	50	2900	5
			40	100		24.5	51		
			28	105		17.8	45		

泵阀系列产品

PUMP AND VALVE SERIES PRODUCTS



性能参数表 Table of Property Parameters

型号 Model	类别代码 Type code	材质代码 Material	流量 Capacity m ³ /h	总扬程 Total lift m	电机功率 Motor power KW	轴功率 Shaft power KW	效率 Efficiency %	转速 Speed r/min	允许吸深 Permissible suction depth m
80GLB(GJB)-D ₃	S.G.	T.G.BXG	56	104	37	31.1	51	2900	5
			44	110		27.9	52		
			32	120		22.7	46		
80GLB(GJB)-D ₄	S.G.	T.G.BXG	60	123	45	35.3	57	2900	5
			50	125		31.5	54		
			30	128		25.5	41		
100GLB(GJB)-A ₁	S.G.	T.G.BXG	62	10	4	2.61	65	1450	4
			50	12		2.33	70		
			32	13		184	62		
100GLB(GJB)-A ₂	S.G.	T.G.BXG	56	16.2	5.5	4.04	61	1450	4
			45.5	17.4		3.53	61		
			28	19.2		3.12	47		
100GLB(GJB)-A ₃	S.G.	T.G.BXG	60	19	5.5	4.44	70	1450	4
			50	20		4	68		
			30	21.3		3.16	55		
100GLB(GJB)-A ₄	S.G.	T.G.BXG	104	19	11	7.17	75	2900	4
			80	24		7.07	74		
			56	27		6.06	68		
100GLB(GJB)-B ₁	S.G.	T.G.BXG	120	16.5	11	7.28	74	2900	5
			100	20		7	78		
			60	24		5.86	67		
100GLB(GJB)-B ₂	S.G.	T.G.BXG	112	22.5	11	9.15	75	2900	5
			88	26		9.07	74		
			64	31		7.95	68		
100GLB(GJB)-B ₃	S.G.	T.G.BXG	50	37.7	11	8.25	59	2900	5
			40	38		7.3	57		
			30	40		6.3	49		
100GLB(GJB)-B ₄	S.G.	T.G.BXG	104	34	15	13.2	73	2900	5
			80	38		11.51	72		
			56	41		9.62	65		
100GLB(GJB)-B ₅	S.G.	T.G.BXG	112	39	18.5	16.3	73	2900	5
			88	44		14.5	72.5		
			64	47		12.61	65		
100GLB(GJB)-C ₁	S.G.	T.G.BXG	56	26	7.5	6.72	59	2900	4
			46.5	28		6.53	56		
			28	29.3		5.45	41		
100GLB(GJB)-C ₂	S.G.	T.G.BXG	60	30	11	7.67	64	2900	5
			50	32		6.92	63		
			30	34		5.44	51		
100GLB(GJB)-D ₃	S.G.	T.G.BXG	120	28	15	12.2	75	2900	5
			100	32		11.2	78		
			60	36		8.42	70		
100GLB(GJB)-D ₁	S.G.	T.G.BXG	120	47	22	19.9	77	2900	5
			100	50		17.9	76		
			60	54		13.6	65		
100GLB(GJB)-D ₂	S.G.	T.G.BXG	104	50	30	20.5	69	2900	5
			80	60		19.2	68		
			56	66		16.51	61		
100GLB(GJB)-D ₃	S.G.	T.G.BXG	68	54	22	16.1	63	2900	5
			60	57		15.7	61		
			48	59		14	57		
100GLB(GJB)-D ₄	S.G.	T.G.BXG	112	59	30	25.77	70	2900	5
			88	70		24.33	69		
			64	76		21.36	62		
100GLB(GJB)-E ₁	S.G.	T.G.BXG	121	75	37	33.3	75	2900	5
			100	80		30.3	72		
			60	87		23.4	61		

泵阀系列产品

PUMP AND VALVE SERIES PRODUCTS



性能参数表 Table of Property Parameters

型号 Model	类别代码 Type code	材质代码 Material	流量 Capacity m ³ /h	总扬程 Total lift m	电机功率 Motor power KW	轴功率 Shaft power KW	效率 Efficiency %	转速 Speed r/min	允许吸深 Permissible suction depth m
100GLB(GJB)-E ₂	S.G.	T.G.BXG	93	82	37	32.7	64	2900	5
			72	85		26.5	63		
			50	90		23.3	53		
100GLB(GJB)-E ₃	S.G.	T.G.BXG	104	97	55	42.3	65	2900	5
			80	101		34.4	64		
			56	105		29.7	54		
100GLB(GJB)-E ₄	S.G.	T.G.BXG	112	104	55	47.3	67	2900	5
			88	110		40.6	65		
			64	120		38.1	55		
100GLB(GJB)-E ₅	S.G.	T.G.BXG	120	118	75	57.5	67	2900	5
			100	125		51.6	66		
			60	133		39.6	55		
100GLB(GJB)-F ₁	S.G.	T.G.BXG	65	110	55	32.4	65	2900	5
			50	120		27.8	64		
			25	130		21.1	42		
100GLB(GJB)-F ₂	S.G.	T.G.BXG	70	135	75	51.4	61	2900	5
			52.5	141		38.1	63		
			42	143		36.3	55		
100GLB(GJB)-F ₃	S.G.	T.G.BXG	85	45	90	59.8	65	2900	5
			78	150		57.9	62		
			54	155		45.7	58		
125GLB(GJB)-A ₁	S.G.	T.G.BXG	180	40	30	26.2	76	2900	6
			145	43.5		24	75		
			105	47		19.19	70		
125GLB(GJB)-A ₂	S.G.	T.G.BXG	120	48	30	23.5	67	2900	6
			100	50		21	65		
			60	52		16.3	53		
125GLB(GJB)-B ₁	S.G.	T.G.BXG	185	45	37	28.5	77.8	2900	6
			160	50		28.3	76.8		
			110	54		22.5	71.5		
125GLB(GJB)-B ₂	S.G.	T.G.BXG	160	55	37	33.1	71	2900	6
			140	60		32.7	70		
			98	65		27.4	64.8		
125GLB(GJB)-B ₃	S.G.	T.G.BXG	130	70	37	34.2	72	2900	6
			124	75		33.5	75		
			108	80		32.1	73		
125GLB(GJB)-C ₁	S.G.	T.G.BXG	180	60	45	40.7	72	2900	6
			158	68		39.9	73.3		
			109	75		33.5	67		
125GLB(GJB)-C ₂	S.G.	T.G.BXG	120	80	45	38.1	68.8	2900	6
			100	83		32	70		
			82	87		31	63		
125GLB(GJB)-D ₁	S.G.	T.G.BXG	110	8	5.5	3.8	67	1450	4
			91	10		3.56	71		
			55	12		3.1	61		
125GLB(GJB)-D ₂	S.G.	T.G.BXG	115	14	7.5	6.5	68	1450	4
			95	16		6.0	70		
			61	18		5.32	57		
125GLB(GJB)-D ₃	S.G.	T.G.BXG	120	18	11	7.7	77	1450	4
			100	20		7.2	76		
			60	21.5		5.6	63		
125GLB(GJB)-D ₄	S.G.	T.G.BXG	190	17	15	11.87	75	1450	5
			160	20		11.46	76		
			110	22		10	66		
125GLB(GJB)-E ₁	S.G.	T.G.BXG	170	26	15	11.7	69	1450	5
			45	23		13	70		
			26	20		13.5	61		

泵阀系列产品

PUMP AND VALVE SERIES PRODUCTS



性能参数表 Table of Property Parameters

型号 Model	类别代码 Type code	材质代码 Material	流量 Capacity m ³ /h	总扬程 Total lift m	电机功率 Motor power KW	轴功率 Shaft power KW	效率 Efficiency %	转速 Speed r/min	允许吸深 Permissible suction depth m
125GLB(GJB)-E ₂	S.G.	T.G.BXG	187	23	18.5	16.3	72	1450	5
			152	27		15.2	74		
			108	30		13.9	64		
125GLB(GJB)-E ₃	S.G.	T.G.BXG	176	33	22	21.4	74	2900	5
			152	36		19.8	73		
			99	40		16.2	67		
125GLB(GJB)-E ₄	S.G.	T.G.BXG	110	37	22	19.1	58	2900	5
			89	40		18.5	59		
			54	43		11.6	54		
125GLB(GJB)-F ₁	S.G.	T.G.BXG	167	85	55	54.4	71	2900	5
			134	88		46	70		
			85	93		32.5	67		
125GLB(GJB)-F ₂	S.G.	T.G.BXG	176	95	75	63.2	72	2900	5
			140	100		53.7	71		
			97	105		41.8	67		
125GLB(GJB)-F ₃	S.G.	T.G.BXG	170	105	75	69.5	71	2900	5
			150	110		62.4	72		
			108	115		49	69		
125GLB(GJB)-F ₄	S.G.	T.G.BXG	190	115	90	79.6	75	2900	5
			165	125		74.6	73		
			118	130		56	70		
150GLB(GJB)-A ₁	S.G.	T.G.BXG	230	30	30	24.5	76	1450	6
			200	32		23	75.7		
			120	34		15.8	70		
150GLB(GJB)-A ₂	S.G.	T.G.BXG	208	33	30	27.49	68	1450	6
			160	38		23.6	72		
			112	40		18.72	66		
150GLB(GJB)-B ₁	S.G.	T.G.BXG	120	60	37	27.68	71	2900	6
			90	66		25.31	64		
			40	70		22.95	58		
150GLB(GJB)-B ₂	S.G.	T.G.BXG	220	39	37	34	69	1450	6
			176	44		28.5	74		
			120	47		24.19	67		
150GLB(GJB)-C ₁	S.G.	T.G.BXG	230	46	45	40.6	69	2900	6
			190	50		36.3	71.3		
			120	53		27.9	62		
150GLB(GJB)-C ₂	S.G.	T.G.BXG	250	38	45	41	68	2900	6
			225	42		36.7	72		
			205	45		35.1	70		
150GLB(GJB)-C ₃	S.G.	T.G.BXG	250	45	55	48.5	63.8	2900	6
			220	50		45.1	68.5		
			195	55		41.2	70.8		
150GLB(GJB)-C ₄	S.G.	T.G.BXG	192	60	55	49.1	64	2900	6
			182	65		45.3	71.6		
			161	70		43.4	71		
150GLB(GJB)-D ₁	S.G.	T.G.BXG	236	62	75	57	69	2900	6
			215	67		54.3	72.1		
			188	71		52	71.3		
150GLB(GJB)-D ₂	S.G.	T.G.BXG	260	70	90	76	68	2900	6
			235	80		72.5	71		
			200	90		69.5	70.5		
150GLB(GJB)-E ₄	S.G.	T.G.BXG	260	10	15	10.4	68	1450	5
			200	12		9.1	72		
			140	14		8.5	63		
150GLB(GJB)-E ₂	S.G.	T.G.BXG	200	14.5	15	11	72	1450	5
			145	17		9.6	70		
			110	18.5		8.7	64		

泵阀系列产品

PUMP AND VALVE SERIES PRODUCTS



性能参数表 Table of Property Parameters

型号 Model	类别代码 Type code	材质代码 Material	流量 Capacity m ³ /h	总扬程 Total lift m	电机功率 Motor power KW	轴功率 Shaft power KW	效率 Efficiency %	转速 Speed r/min	允许吸深 Permissible suction depth m
150GLB(GJB)-E ₃	S.G.	T.G.BXG	195	21	18.5	15.5	72	1450	5
			155	24		14.6	70		
			102	26		11.3	64		
150GLB(GJB)-E ₄	S.G.	T.G.BXG	214	24	22	19.2	73	1450	5
			165	28		17.5	72		
			115	30		15	63		
200GLB(GJB)-A ₁	S.G.	T.G.BXG	425	15	30	25.2	70	1450	6
			350	18		24.5	70		
			286	20		24	67		
200GLB(GJB)-A ₂	S.G.	T.G.BXG	420	18	37	27.6	74.6	1450	6
			340	20		25.5	72.6		
			240	28		23.1	63		
200GLB(GJB)-A ₃	S.G.	T.G.BXG	365	20	37	29.4	69	1450	6
			310	24		26	78		
			218	27		22	74		
200GLB(GJB)-A ₄	S.G.	T.G.BXG	445	23	45	40	70	1450	6
			360	27		35.1	75.6		
			256	31		30	72		
200GLB(GJB)-B ₁	S.G.	T.G.BXG	420	30	55	48.2	74	1450	6
			386	33		43.2	80		
			240	37		34.6	70		
200GLB(GJB)-B ₂	S.G.	T.G.BXG	342	35	55	42.4	77	1450	6
			295	41		41	80		
			236	45		36.5	78.5		
200GLB(GJB)-B ₃	S.G.	T.G.BXG	448	35	75	56.2	76	1450	6
			372	40		52.8	76.8		
			321	45		51.5	75		
200GLB(GJB)-B ₄	S.G.	T.G.BXG	460	45	90	74.2	76	1450	6
			400	50		67.2	81		
			240	55		48.6	74		
200GLB(GJB)-C ₁	S.G.	T.G.BXG	323	40	55	49	72	1450	6
			270	47		45.5	76		
			180	54		39.5	67		
200GLB(GJB)-C ₂	S.G.	T.G.BXG	352	54	90	73.9	75	1450	6
			289	62.5		68.3	79		
			220	68		62.6	74		
200GLB(GJB)-C ₃	S.G.	T.G.BXG	520	70	132	125.4	79	1450	6
			400	80		114.6	76		
			280	85		89.9	72		
200GLB(GJB)-C ₄	S.G.	T.G.BXG	378	62	110	89.9	71	1450	6
			342	66		87.8	70		
			305	70		85.5	68		
200GLB(GJB)-C ₅	S.G.	T.G.BXG	320	70	110	89.7	70	1450	6
			290	75		85.8	69		
			260	80		83.3	68		
200GLB(GJB)-D ₁	S.G.	T.G.BXG	435	8.5	18.5	13.4	75	1450	5
			340	10		12.1	77		
			246	10.8		10.1	67		
200GLB(GJB)-D ₂	S.G.	T.G.BXG	480	10.5	22	17.6	78	1450	5
			360	12.5		16	77		
			260	13.4		13.6	70		
200GLB(GJB)-D ₃	S.G.	T.G.BXG	420	13	22	20.4	73	1450	5
			325	17		20.1	75		
			230	19		17.6	68		
250GLB(GJB)-A ₁	S.G.	T.G.BXG	600	14	37	28.1	81	1450	6
			530	16		29.2	79		
			418	18		28	73		

泵阀系列产品

PUMP AND VALVE SERIES PRODUCTS



性能参数表 Table of Property Parameters

型号 Model	类别代码 Type code	材质代码 Material	流量 Capacity m ³ /h	总扬程 Total lift m	电机功率 Motor power KW	轴功率 Shaft power KW	效率 Efficiency %	转速 Speed r/min	允许吸深 Permissible suction depth m
250GLB(GJB)-A ₂	S.G.	T.G.BXG	670	16	45	34.75	84	1450	6
			550	20		36.3	82		
			403	22		31	78		
250GLB(GJB)-B ₁	S.G.	T.G.BXG	768	15	55	43	77	1450	6
			705	18		45.1	73		
			620	20		46.5	72		
250GLB(GJB)-B ₂	S.G.	T.G.BXG	600	23	55	47.6	78	1450	6
			505	27		48.8	76		
			370	31		42.4	73.7		
250GLB(GJB)-C ₁	S.G.	T.G.BXG	670	26	75	58.6	81	1450	6
			550	32		60.5	80		
			360	36		51	77		
250GLB(GJB)-C ₂	S.G.	T.G.BXG	600	37	90	80.6	75	1450	6
			500	44		84	74		
			365	47		69.8	67		
250GLB(GJB)-C ₃	S.G.	T.G.BXG	680	35	110	90	72	1450	6
			606	38		87.1	72.2		
			560	40		85.2	71		
250GLB(GJB)-C ₄	S.G.	T.G.BXG	540	45	110	93.2	78	1450	6
			460	50		98.5	76		
			395	55		84.8	70		
250GLB(GJB)-C ₅	S.G.	T.G.BXG	420	55	110	86	73	1450	6
			385	56		84.5	72		
			350	60		83.2	69		
250GLB(GJB)-D ₁	S.G.	T.G.BXG	650	45	132	98.2	82	1450	6
			550	50		95.5	78.5		
			456	55		88.8	77		
250GLB(GJB)-D ₂	S.G.	T.G.BXG	540	55	132	108	75	1450	6
			508	57.5		105	76		
			468	60		103.5	75		
250GLB(GJB)-D ₃	S.G.	T.G.BXG	520	60	145	124	68.5	1450	6
			490	63		122.3	71		
			434	65		118	67		
250GLB(GJB)-E ₁	S.G.	T.G.BXG	450	65	145	120.3	65	1450	6
			410	70		115.8	68		
			380	75		114	65		
250GLB(GJB)-E ₂	S.G.	T.G.BXG	365	80	145	128	62	1450	6
			338	85		125.1	63		
			293	90		118.1	60		
300GLB(GJB)-A ₁	S.G.	T.G.BXG	800	10	37	30	70.6	1450	6
			720	12		31	75		
			600	14		31.3	72		
300GLB(GJB)-A ₂	S.G.	T.G.BXG	700	15	45	37.1	77	1450	6
			580	18		35.3	80		
			520	20		35.1	79		
300GLB(GJB)-A ₃	S.G.	T.G.BXG	880	12	55	41.2	70	1450	6
			700	16		40.6	75		
			540	18		37	71.5		
300GLB(GJB)-B ₁	S.G.	T.G.BXG	880	15	75	48	75	1450	6
			790	19		55.1	74		
			610	23		52.3	73		
300GLB(GJB)-B ₂	S.G.	T.G.BXG	710	24	75	60.7	76	1450	6
			650	26		56.3	82		
			530	30		54	79		
300GLB(GJB)-B ₃	S.G.	T.G.BXG	900	24	90	73.1	80	1450	6
			785	27		70.4	82		
			680	30		68.7	80.1		

泵阀系列产品

PUMP AND VALVE SERIES PRODUCTS



性能参数表 Table of Property Parameters

型号 Model	类别代码 Type code	材质代码 Material	流量 Capacity m ³ /h	总扬程 Total lift m	电机功率 Motor power KW	轴功率 Shaft power KW	效率 Efficiency %	转速 Speed r/min	允许吸深 Permissible suction depth m
300GLB(GJB)-C ₁	S.G.	T.G.BXG	850	30	110	92	75	1450	6
			720	32		85	74		
			600	36		81.7	72		
300GLB(GJB)-C ₂	S.G.	T.G.BXG	835	37	132	105	80	1450	6
			683	43		106	75		
			502	47		88	73		
300GLB(GJB)-C ₃	S.G.	T.G.BXG	720	40	132	106	74	1450	6
			650	42		95	78		
			585	45		99	72		
300GLB(GJB)-D ₁	S.G.	T.G.BXG	893	42	160	131	78	1450	6
			750	46		117.4	80		
			705	50		127.9	75		
300GLB(GJB)-D ₂	S.G.	T.G.BXG	700	52	160	127.1	78	1450	6
			622	56		126.4	75		
			580	60		131	72		
300GLB(GJB)-D ₃	S.G.	T.G.BXG	608	55	145	119.8	76	1450	6
			560	60		121.9	75		
			480	65		116.3	73		
300GLB(GJB)-E ₁	S.G.	T.G.BXG	850	55	200	167.4	76	1450	6
			793	58		166.9	75		
			650	62		148.3	74		
300GLB(GJB)-E ₂	S.G.	T.G.BXG	900	57	220	195	72	1450	6
			820	62		180	77		
			680	66		172.5	71		
300GLB(GJB)-E ₃	S.G.	T.G.BXG	915	70	280	246	71	1450	6
			758	78		217	74		
			610	82		192	71		
300GLB(GJB)-E ₄	S.G.	T.G.BXG	630	85	250	202.5	72	1450	6
			570	90		186.3	75		
			510	95		180.7	73		
300GLB(GJB)-F ₁	S.G.	T.G.BXG	600	60	160	130.6	75	1450	6
			540	65		129	74		
			500	70		128	74		
300GLB(GJB)-F ₂	S.G.	T.G.BXG	480	75	160	135.5	72	1450	6
			440	80		134.2	71		
			390	85		130	69		
350GLB(GJB)-A	S.G.	T.G.BXG	1150	9	55	40.3	70	980	6
			980	12		45	72		
			780	15		47	69		
350GLB(GJB)-A ₁	S.G.	T.G.BXG	1380	12	90	65.2	70	980	6
			1250	15		69	74		
			1000	18		68	72		
350GLB(GJB)-A ₂	S.G.	T.G.BXG	1050	20	90	78.2	73	1450	6
			940	22		75.1	75		
			805	25		73	75		
350GLB(GJB)-A ₃	S.G.	T.G.BXG	1160	5	132	105	75	1450	6
			1030	28		100.7	78		
			920	30		98.9	76		
350GLB(GJB)-A ₄	S.G.	T.G.BXG	1015	32	145	128	70	1450	6
			970	35		122.5	76		
			860	38		120	74		
350GLB(GJB)-A ₅	S.G.	T.G.BXG	880	40	160	135	71	1450	6
			840	42		130.6	74		
			740	45		126	72		
350GLB(GJB)-B ₁	S.G.	T.G.BXG	920	48	200	160.3	75	1450	6
			875	50		152.7	78		
			780	55		145	80		

泵阀系列产品

PUMP AND VALVE SERIES PRODUCTS



性能参数表 Table of Property Parameters

型号 Model	类别代码 Type code	材质代码 Material	流量 Capacity m ³ /h	总扬程 Total lift m	电机功率 Motor power KW	轴功率 Shaft power KW	效率 Efficiency %	转速 Speed r/min	允许吸深 Permissible suction depth m
350GLB(GJB)-B ₂	S.G.	T.G.BXG	1470	35	220	185.6	75	1450	6
			1260	42		182.1	79		
			970	48		175.5	72		
350GLB(GJB)-B ₃	S.G.	T.G.BXG	1250	35	200	161	75	1450	6
			1060	38		145	76		
			990	40		138	78		
350GLB(GJB)-B ₄	S.G.	T.G.BXG	1160	50	250	211	75	1450	6
			1080	55		207.2	78		
			810	60		182	73		
350GLB(GJB)-B ₅	S.G.	T.G.BXG	1240	60	315	264	77	1450	6
			1170	65		262	79		
			900	70		228.5	75		
350GLB(GJB)-B ₆	S.G.	T.G.BXG	1330	70	400	323	79	1450	6
			1260	75		322	80		
			970	80		275	77		
350GLB(GJB)-C ₁	S.G.	T.G.BXG	1380	40	250	213	72	1450	6
			1290	42		206	73		
			1080	45		196	68		
350GLB(GJB)-C ₂	S.G.	T.G.BXG	1350	48	280	248.2	71	1450	6
			1270	50		235.1	74		
			1130	55		232	73		
350GLB(GJB)-D	S.G.	T.G.BXG	1310	28	160	131.5	76	1450	6
			1200	30		124.1	79		
			1050	32		123.6	74		
400GLB(GJB)-A ₄	S.G.	T.G.BXG	1450	10	75	55	72	980	6
			1240	12		54.1	75		
			970	15		53	70		
400GLB(GJB)-A ₂	S.G.	T.G.BXG	800	10	90	73	67	980	6
			1350	12		74	70		
			1200	15		72.1	68		
400GLB(GJB)-A ₃	S.G.	T.G.BXG	1500	18	132	108.2	68	980	6
			1380	20		104.5	72		
			1220	22		102.8	71		
400GLB(GJB)-B ₁	S.G.	T.G.BXG	1330	18	110	89.2	73	980	6
			1225	20		86.3	78		
			1090	22		84.8	77		
400GLB(GJB)-B ₂	S.G.	T.G.BXG	1550	25	185	145	73	1450	6
			1410	28		138	78		
			1290	30		137	77		
400GLB(GJB)-B ₃	S.G.	T.G.BXG	1200	32	160	130.1	84	1450	6
			1030	35		125.5	78		
			930	38		123.8	76		
400GLB(GJB)-C ₁	S.G.	T.G.BXG	1850	18	145	120	72	980	6
			1700	20		118.5	78		
			1310	22		106	74		
400GLB(GJB)-C ₂	S.G.	T.G.BXG	1380	25	145	125.3	75	980	6
			1165	28		116.9	76		
			1060	30		112	77		
400GLB(GJB)-D ₁	S.G.	T.G.BXG	1880	25	220	180	71	1450	6
			1670	28		175.2	73		
			1460	30		172.2	70		
400GLB(GJB)-D ₂	S.G.	T.G.BXG	1500	32	220	180.3	73	1450	6
			1310	35		176.1	71		
			1180	38		170	72		
400GLB(GJB)-D ₃	S.G.	T.G.BXG	1700	32	250	215	70	1450	6
			1525	35		205	71		
			1370	39		190.6	75		

泵阀系列产品

PUMP AND VALVE SERIES PRODUCTS



性能参数表 Table of Property Parameters

型号 Model	类别代码 Type code	材质代码 Material	流量 Capacity m ³ /h	总扬程 Total lift m	电机功率 Motor power KW	轴功率 Shaft power KW	效率 Efficiency %	转速 Speed r/min	允许吸深 Permissible suction depth m
400GLB(GJB)-E ₁	S.G.	T.G.BXG	1600	40	280	245.3	72	1450	6
			1500	42.5		236	75		
			1280	45		224	71		
400GLB(GJB)-E ₂	S.G.	T.G.BXG	1470	48	315	270	72	1450	6
			1380	50		256	74		
			1230	55		240	77		
400GLB(GJB)-E ₃	S.G.	T.G.BXG	1700	48	355	310	72	1450	6
			1610	50		291	76		
			1440	55		287	75		
400GLB(GJB)-E ₄	S.G.	T.G.BXG	1370	60	355	311	72	1450	6
			120	65		294	75		
			1130	70		288	75		
400GLB(GJB)-E ₅	S.G.	T.G.BXG	1580	70	500	410	74	1450	6
			1450	75		395	75		
			1250	80		386	71		
400GLB(GJB)-A ₁	S.G.	T.G.BXG	2325	10	110	88	72	980	6
			2016	12		87.8	75		
			1620	15		87	76		
450GLB(GJB)-A ₂	S.G.	T.G.BXG	2010	14	132	101	76	980	6
			1850	17		108	80		
			1280	23		111	73		
450GLB(GJB)-A ₃	S.G.	T.G.BXG	1800	18	160	123	72	980	6
			1600	20		118	74		
			1450	23		116	78		
450GLB(GJB)-B ₁	S.G.	T.G.BXG	2250	18	200	147	75	980	6
			2000	20		145	76		
			1800	22		140	77		
450GLB(GJB)-B ₂	S.G.	T.G.BXG	2180	20	220	170	71	1450	6
			2050	25		178	78		
			1674	30		180	76		
450GLB(GJB)-B ₃	S.G.	T.G.BXG	1640	25	200	150	75	1450	6
			1500	28		151	76		
			1350	32		150	78		
450GLB(GJB)-C	S.G.	T.G.BXG	1850	35	315	260	71	1450	6
			1750	38		250	73		
			1600	40		240	73		
450GLB(GJB)-C ₂	S.G.	T.G.BXG	1500	45	315	260	71	1450	6
			1400	50		251	76		
			1210	55		246	74		
450GLB(GJB)-D ₁	S.G.	T.G.BXG	2250	45	450	380	73	1450	6
			2000	50		36	76		
			1680	55		350	72		
450GLB(GJB)-D ₂	S.G.	T.G.BXG	1650	60	450	380	71	1450	6
			1480	65		359	73		
			1300	70		351	71		
450GLB(GJB)-A ₁	S.G.	T.G.BXG	2330	20	250	180	71	980	6
			1950	25		177	75		
			1600	30		170	76		
500GLB(GJB)-A ₂	S.G.	T.G.BXG	2400	30	315	257	76	980	6
			2000	35		240	80		
			1550	40		231	73		
500GLB(GJB)-A ₃	S.G.	T.G.BXG	2450	35	400	330	71	980	6
			2330	40		325	78		
			2000	45		320	76		
500GLB(GJB)-A ₄	S.G.	T.G.BXG	2000	50	450	385	71	980	6
			1800	55		370	76		
			1600	60		360	73		

泵阀系列产品

PUMP AND VALVE SERIES PRODUCTS



性能参数表 Table of Property Parameters

型号 Model	类别代码 Type code	材质代码 Material	流量 Capacity m ³ /h	总扬程 Total lift m	电机功率 Motor power KW	轴功率 Shaft power KW	效率 Efficiency %	转速 Speed r/min	允许吸深 Permissible suction depth m
500GLB(GJB)-B ₁	S.G.	T.G.BXG	2400	40	450	354	74	980	6
			2250	45		344	80		
			1900	50		335	77		
500GLB(GJB)-B ₂	S.G.	T.G.BXG	2500	55	630	540	71	980	6
			2400	60		525	75		
			2100	65		510	73		
500GLB(GJB)-B ₃	S.G.	T.G.BXG	2480	68	710	621	74	1450	6
			2260	72		614	72		
			2050	75		602	70		
500GLB(GJB)-C ₁	S.G.	T.G.BXG	2550	25	315	248	70	980	6
			2200	30		239	75		
			1800	35		230	75		
500GLB(GJB)-C ₂	S.G.	T.G.BXG	2600	30	355	300	71	980	6
			2400	35		295	78		
			2000	40		288	76		
500GLB(GJB)-C ₃	S.G.	T.G.BXG	2800	40	500	401	76	980	6
			2550	45		395	79		
			2150	50		380	77		
500GLB(GJB)-C ₄	S.G.	T.G.BXG	2460	55	560	505	73	980	6
			2250	60		498	74		
			1910	65		486	70		
600GLB(GJB)-A ₁	S.G.	T.G.BXG	3340	16	280	212	70	980	6
			3120	18		205	75		
			2900	20		200	76		
600GLB(GJB)-A ₂	S.G.	T.G.BXG	3800	20	355	302	70	740	6
			3530	22		290	73		
			3150	25		280	77		
600GLB(GJB)-A ₃	S.G.	T.G.BXG	3670	25	400	330	76	740	6
			3180	30		320	81		
			2550	35		315	77		
600GLB(GJB)-A ₄	S.G.	T.G.BXG	3600	35	630	500	71	980	6
			3250	40		490	73		
			2800	45		481	72		
600GLB(GJB)-B ₁	S.G.	T.G.BXG	3800	22	400	300	76	980	6
			3520	25		306	78		
			2950	30		315	77		
600GLB(GJB)-B ₂	S.G.	T.G.BXG	3700	30	560	430	71	980	6
			3370	35		425	76		
			2850	40		416	75		
600GLB(GJB)-B ₃	S.G.	T.G.BXG	3600	45	780	590	75	980	6
			3250	50		572	78		
			2850	55		565	76		
600GLB(GJB)-C ₁	S.G.	T.G.BXG	3600	40	630	531	74	980	6
			3320	45		520	78		
			2800	50		515	74		
600GLB(GJB)-C ₂	S.G.	T.G.BXG	2800	55	710	580	73	980	6
			2600	60		560	76		
			2500	65		546	75		
600GLB(GJB)-C ₃	S.G.	T.G.BXG	2500	70	780	628	76	1450	6
			2250	75		618	74		
			2080	78		615	72		